

**STUDY
DEGREES
LOCALLY**

**CU
PER**

ROTHERHAM

NORTH NOTTS

DEARNE VALLEY

WELCOME

Whether you are continuing your studies, changing career path or returning to education, we are here to help you succeed.

Here at University Centre Rotherham (UCR), Rotherham College, North Notts College and Dearne Valley College, our students graduate from a wide range of university-level courses each year. We are extremely proud of their success and the progress they make in their careers or self-employment.

With nearly forty university-level courses available at UCR and across our three Colleges, we offer flexible access to higher-level skills and training to help you accomplish and exceed your personal, academic and career goals.

Our courses are designed in partnership with employers and our partner universities to ensure you leave us with the skills and qualifications you need to excel in your chosen career. We pride ourselves on the expert delivery of our courses by our talented team of lecturers who bring with them a breadth of practical experience in their relevant professions and a passion for their subject area.

No matter what path you choose to embark on with us, we promise you a first-class learning experience where you will be part of a tight-knit learning community within a supportive environment. Our staff take the time to get to know you as individuals and will provide you with the one-to-one support you deserve whilst undertaking your course.

By choosing to start or continue your higher-level studies with us we will in return offer you an exciting, challenging and rewarding experience.

We look forward to welcoming you on your chosen course of study and to celebrating your success with you at your future graduation.

OPEN EVENTS 2019/20

Visit us at one of our Open Events held at our brand new University Centre Rotherham on the following dates between 3pm - 6pm.

- **Wednesday 22nd May 2019**
- **Wednesday 10th July 2019**
- **Wednesday 9th October 2019**
- **Wednesday 20th November 2019**
- **Wednesday 8th January 2020**

Please refer to our website for further dates:

ucr.rotherham.ac.uk



CONTENTS

Welcome/Open Events	2
Why Study With Us	6
Our Campus Locations	8
University Centre Rotherham (UCR)	10
Study At Our Colleges	12
Continuing In Education	14
Returning To Education	16
What Our Students Say	18
Graduation	20
Funding and Financial Support	24
Student Support Services	26
Entry Requirements	28
How To Apply	30

COURSES

Access to HE	32
Accounting, Business and Management	40
Animal Management	48
Arts	52
Caring Professions	58
Computing and Digital	66
Criminology and Public Services	74
Education	78
Engineering	88
Hair and Beauty	94
Media and Photography	102
Performance	106
Sport	112
Higher or Degree Apprenticeships	118
Course Index	122

We make every effort to ensure the information within our Higher Education Prospectus is accurate and a true representation of the courses we are offering in 2019-20 and 2020-21. However, we do reserve the right to make changes if necessary.

KEY

- UCR** University Centre Rotherham
- TCC** Rotherham College Town Centre Campus
- DC** Rotherham College Dinnington Campus
- WC** North Notts College Worksop Campus
- RP** North Notts College Retford Post-16 Centre
- DV** Dearne Valley College
-  Courses delivered over two days or less

WHY STUDY WITH US?

1. STUDY LOCALLY

We provide you with the opportunity to study a degree right on your doorstep with the benefit of staying at home, saving money and juggling your studies around your existing commitments.

2. DEGREES ACCREDITED BY TOP UNIVERSITIES

Our degree and higher-level qualifications are accredited by partner universities including Sheffield Hallam University and University of Hull.

3. BRAND NEW SMALL, FRIENDLY CAMPUS

You will have access to our brand new purpose-built campus, University Centre Rotherham (UCR), which is based near our Rotherham College town centre campus. You will benefit from state-of-the-art facilities, smaller class sizes and learn within a friendly, tight-knit community that will help support you with your studies.

4. HIGH QUALITY DEGREES, LOW FEES

Our tuition fees are excellent value for money being lower than most traditional universities that charge £9,000 or over, but that doesn't mean you're substituting the quality of your learning experience or qualification. Get a fully-accredited degree awarded by one of our partner universities, just pay less!

5. ACCESS TO SPECIALIST FACILITIES

We have fantastic facilities designed to reflect real working environments and standards, along with the latest equipment and resources.

6. INDUSTRY EXPERIENCED TEACHING PROFESSIONALS

Our talented team of lecturers bring with them expert knowledge in their fields and a breadth of experience to their teaching, each of which are passionate about the development and achievements of their students.

7. SUPPORTIVE AND CARING LEARNING ENVIRONMENT

Being within a small, friendly campus means that you won't get lost in the crowd. Our staff take the time to get to know you as individuals and will provide you with the one-to-one support you deserve whilst undertaking your course.

8. FLEXIBLE STUDY AROUND YOUR COMMITMENTS

We offer courses on both a full and part-time basis so you can fit studying alongside your existing commitments. Some of our full-time courses are delivered over only one to two days a week (depending on subject area), allowing even full-time courses to be accessible to those who wish to fit learning into their busy schedules.

9. EXCELLENT EMPLOYER LINKS

Our extensive employer links ensure that our curriculum matches that of local and regional skill needs as well as offering you the opportunity for work experience and future employment. You will also be able to participate in guest speaker sessions and visits from industry experts.

10. FANTASTIC STUDENT EXPERIENCE

Whether you study within our UCR campus or at one of our college campuses, the student experience is one of a kind. Our small student numbers and friendly team of staff means that you will feel like a member of the family. You can also volunteer as a Student Ambassador to support with Open Events, run for a role in the Student Union or become a Student Voice Representative building your CV and employability skills whilst having your say.



OUR CAMPUS LOCATIONS

UNIVERSITY CENTRE ROTHERHAM

UCR is our university centre located on Doncaster Gate, in the heart of Rotherham.

University Centre Rotherham

Doncaster Gate
Rotherham
S64 1DA

ROTHERHAM COLLEGE

Rotherham College has two campuses, based in Rotherham Town Centre and in Dinnington.

Town Centre Campus

Eastwood Lane
Rotherham
S65 1EG

Dinnington Campus

Doe Quarry Lane
Dinnington
S25 2NF

NORTH NOTTS COLLEGE

North Notts College is located in Worksop and is a partner of the Retford Post-16 Centre (also referred to as the Diverse Education Centre).

Worksop Campus

Carlton Road
Worksop
S81 7HP

Retford Post-16 Centre

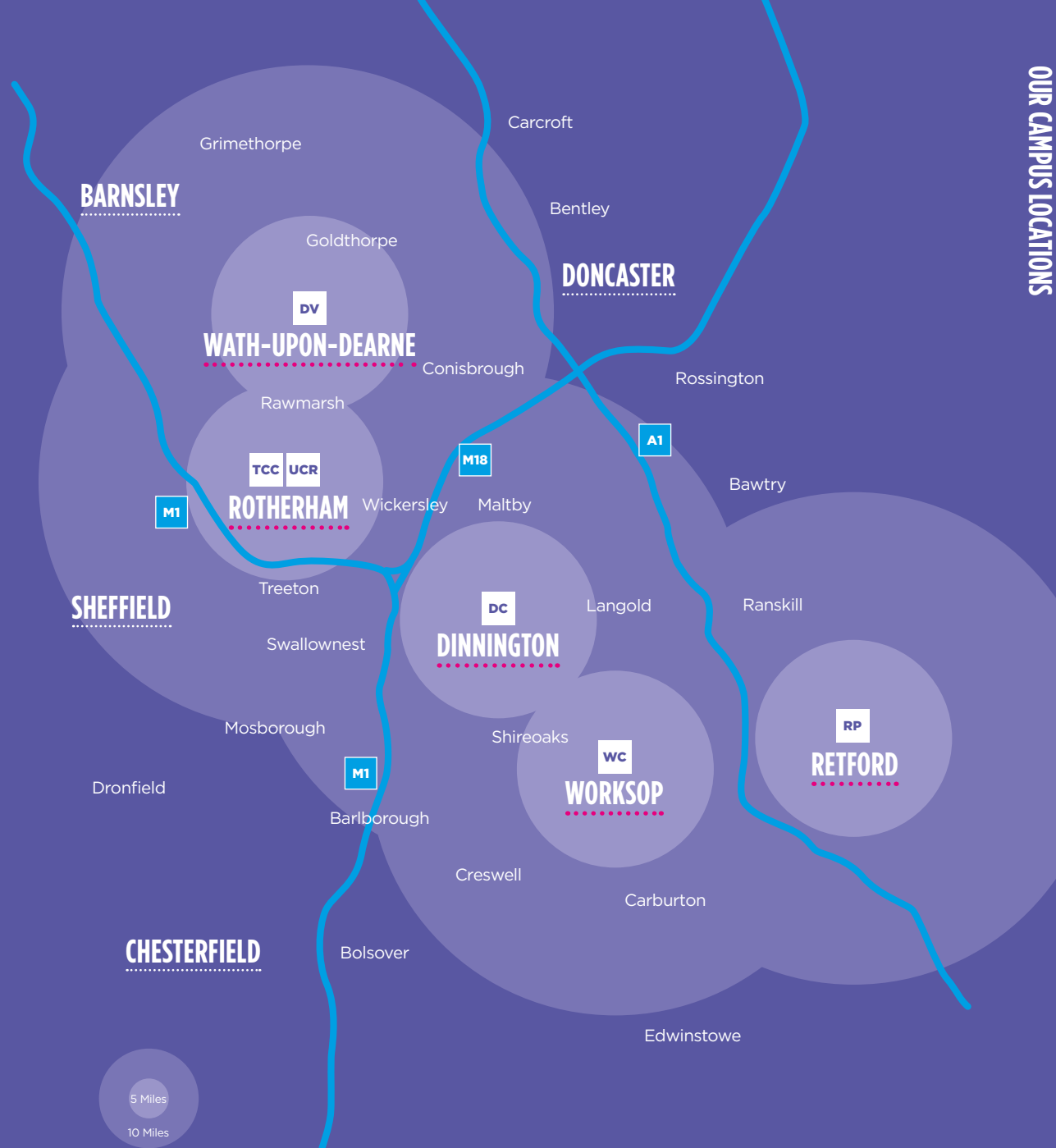
Old Hall Drive
Retford
DN22 7EA

DEARNE VALLEY COLLEGE

Dearne Valley College is based in Wath-upon-Dearne in Rotherham.

Dearne Valley College

Wath-upon-Dearne
Rotherham
S63 7EW



CAMPUS KEY

- UCR** University Centre Rotherham
- TCC** Rotherham College Town Centre Campus
- DC** Rotherham College Dinnington Campus
- WC** North Notts College Worksop Campus
- RP** North Notts College Retford Post-16 Centre
- DV** Dearne Valley College

UNIVERSITY CENTRE ROTHERHAM

Study locally at our brand new campus and learn within a friendly, tight-knit community that will help support you with your studies.

University Centre Rotherham (UCR) is a brand new £10.5 million campus dedicated to offering degrees and professional training qualifications, providing a state-of-the-art teaching facility in the heart of Rotherham. The campus opened its doors to students in Autumn 2018 providing access to Level 4 to Level 7 courses in a wide range of subjects such as Engineering, Health and Social Care, Business, Computing, Performance, Media, Graphic Design, Education and many more.

Our degree and higher-level qualifications are accredited by top universities and awarding bodies including Sheffield Hallam University and University of Hull to ensure access to excellent courses locally, with the benefit of lower tuition fees and being able to juggle existing commitments around study.

The centre is home to a range of dedicated facilities including a 120 person capacity seminar room, a fully equipped two-storey library, independent and group study spaces, exhibition spaces, social areas and a café.

Learning within a modern teaching facility will equip you with the skills you need to excel once you graduate with us and our nurturing environment will ensure you receive the one-to-one support you need to get there.

For more information about UCR, please visit ucr.rotherham.ac.uk.



STUDY AT OUR COLLEGES



ROTHERHAM COLLEGE

At Rotherham College we are dedicated to your learning. We specialise in technical and career focussed training and education, providing students with high-quality training including hands-on experience to develop the crucial skills you need for your future career.

We have campuses in Rotherham Town Centre and Dinnington – across both sites we have a number of industry-standard facilities and equipment to enhance your learning experience.

We offer a range of university-level courses including Animal Management, which is delivered at our Dinnington Campus where we house over 200 animals on our farm. Engineering is predominantly based within our Engineering Centre of Excellence at our Town Centre Campus for practical elements of the course and theory is delivered from University Centre Rotherham. Theatrical Hair and Media Make-up is also mainly delivered from our Town Centre Campus where you will learn within state-of-the-art facilities and on real clients as part of large scale projects.



NORTH NOTTS COLLEGE

North Notts College is the leading provider of education and training in the North Nottinghamshire area offering a range of degree qualifications in subjects such as Computing, Counselling, Specialist Make-up and Sport.

The majority of our Higher Education courses are based at our main campus in Worksop, with provision such as Sport and Media Make-up being delivered at the Retford Post-16 Centre. This allows our higher-level courses to be accessible within the nearby areas of Worksop and Retford providing our learners with the excellent resources based at each campus.

We have a number of industry-standard facilities that we continually invest in to ensure our learners leave us fully prepared for the workplace.

North Notts College and the Retford Post-16 Centre also have free parking on site for all staff and learners.



DEARNE VALLEY COLLEGE

Dearne Valley College is situated in the heart of Dearne Valley, serving the communities of Rotherham, Barnsley and Doncaster and increasing their access to university-level courses and higher-level skills.

We deliver a number of university-accredited qualifications in areas such as Applied Justice and Social Science and Sport within our small, friendly campus where you will also find access to free parking on-site. We are known for our excellent and huge range of high quality sport facilities and equipment. This includes an on-site sports and fitness centre, multisport cages and AstroTurf to provide our students with a first-class learning experience as well as preparing them for a career within the industry.



All of our Higher Education students have access to libraries and student services across each campus as well as all of our excellent facilities within our brand-new campus, University Centre Rotherham (UCR) based in the heart of Rotherham.

For more information about any of our Colleges, please visit:

Rotherham College – www.rotherham.ac.uk

North Notts College – www.nnc.ac.uk

Dearne Valley College – www.dearne-coll.ac.uk

CONTINUING IN EDUCATION

Your next steps in education aren't too far away. Local ambitions, brighter futures.

Deciding to embark onto Higher Education after being at college or sixth form can be daunting, especially if you think you have to move away from family and friends, get into large amounts of debt and leave all your home comforts behind.

That's why studying your degree locally could be the best decision you'll ever make.

Across our brand new University Centre Rotherham (UCR) and at our Colleges, you can study a range of degree and higher-level qualifications which are accredited by top universities and awarding bodies including Sheffield Hallam University and University of Hull. This ensures you have access to excellent courses locally, the benefit of lower tuition fees as well as being able to juggle existing commitments around your studies. In short, you can still gain a fully accredited degree to help with your career ambitions all whilst staying at home, fitting in studying around part-time work, saving money and still receiving a first-class student experience.

Our small, friendly campuses mean that you will be recognised as an individual whilst studying with us. You will be part of smaller class sizes compared to other big city universities where you will have better access to one-to-one support and guidance during course contact time and learn within a supportive and relaxed environment.

Our existing students who have progressed onto Higher Education straight from college or sixth form said there were many reasons why they chose to study their degrees locally with us. These included the ease of access to courses they were passionate about studying, our strong links with local employers meaning they had opportunities to gain industry links and work placements, as well as the tight-knit and supportive learning community they could be part of.

We are passionate about providing our students with access to higher-level qualifications and the skills they need to succeed in their future careers. Our broad stretch of campus locations in South Yorkshire and North Nottinghamshire mean that studying a degree is easier and more convenient than ever.



KAI ATTREE

BSc (Hons) in Computing and Systems Development

"I really enjoy my course and everything we do in it. I would highly recommend University Centre Rotherham to others as the building is located right within the town centre, it has great links with local businesses, the tutors are always available when you need help and the facilities are great."

RETURNING TO EDUCATION

It's never too late to get back into education. Ambition has no age limit.

UCAS defines a mature student as anyone over the age of 21 when they start their degree-level studies. We welcome people of all ages and backgrounds to join us on our wide range of courses to help with their personal and professional development.

If you're thinking of returning to education, developing your current skill set to excel in your chosen career or looking for a complete career change, we are here to help.

With University Centre Rotherham (UCR) and all of our college campuses located within easy access to local amenities and a range of public transport we are the ideal choice for mature learners looking to take the next steps in education with ease by studying a higher-level course right on your doorstep.

With a wide range of our degree-level courses delivered over just a few days of the week, sometimes even on an evening, our course delivery is ideal for mature learners looking to fit their studies around other commitments such as family or employment.

Look for the  symbol next to our course descriptions throughout this prospectus to discover courses you can study over two days or less.

We know returning to education and being in the midst of a university campus environment can be daunting, but we are here to support you every step of the way. You'll be surprised at just how many mature learners just like you have joined us on their higher-level study journey and not only gained so much from their end qualification, but from the experience of being in education again and meeting a range of new people.

We are proud to have such a diverse student cohort, 52% of whom are mature learners and their work/life experience and contribution to higher education and our other students is invaluable.



LORRAINE BATTY

BA (Hons) in Media, Moving Image and Photography

"I chose to study at University Centre Rotherham as it suited my circumstances being a mature student. Its locality, ease of access, facilities, professional equipment and support from tutors are what I enjoy the most about coming here. My tutors are very knowledgeable about their subject area and help us to have good links with professionals within the industry."



WHAT OUR STUDENTS SAY

AMY

BA (Hons) in Theatre, Acting and Performance and PGCE

"Being able to study locally is a massive benefit to students who can't or don't want to leave home for their studies."

SAFINA

Cert Ed

"It was really important to me to study locally. If it wasn't for UCR, I would probably never have undertaken a course of this level."

LAVIN

BSc (Hons) in Computing and Systems Development

"My tutors were incredibly supportive when I needed to juggle my work and looking after my children - without this support I would not have achieved a course at this level."

MILLISA

BA (Hons) in Media, Moving Image and Photography

"I love the one-to-one support we receive here; I can always seek help when needed."

AARON

PGCE

"I know I will always get the support I need to achieve my qualification; the staff are supportive and the new centre is in a great location."

HUMAIRAA

Foundation Degree in Graphic Design

"Working with live clients to gain real industry experience and build my design portfolio has been really valuable."

TONI-MARIE

Foundation Degree (FdSc) in Professional Practice in Health and Social Care

"UCR is great for helping out mature learners to progress into their dream careers; I've loved learning new skills and seeing how I'm progressing in my life."

CHLOE

Foundation Degree in Tourism and Hospitality Management

"I feel so comfortable learning here as it's so close to home and it gives you the flexibility to fit in working around studying."

SALLY

Cert Ed

"The facilities and range of courses you can study here are excellent. I particularly like how accessible UCR is and how our course fees are competitive."

GRADUATION

To celebrate the success of our Higher Education students, University Centre Rotherham (UCR), Rotherham College, North Notts College and Dearne Valley College hold a prestigious Graduation ceremony each year.

The ceremony is one of the highlights of our academic year and is a great opportunity for our students to celebrate their achievements with family, friends, tutors and fellow students.





FUNDING AND FINANCIAL SUPPORT

STUDENT LOANS

Tuition Fee Loans

Our full-time courses and some of our part-time courses are eligible for funding via the Student Loans Company, and this is how most of our students fund their tuition fees.

Student loans are repayable for graduates from the April following the completion of your course and only when your earnings rise above £25,000 per year.

This will be deducted from your salary in the same way that tax and national insurance payments are deducted.

For more information on eligibility, the application process and repayment, please visit www.slc.co.uk

Maintenance Loans

There may be maintenance loans and grants available to eligible students to support with living costs during your studies.

For more information on eligibility, the application process, potential grants and repayment, please visit www.slc.co.uk

ADVANCED LEARNER LOANS

Advanced Learner Loans are tuition fee loans designed for students aged 19* or above, who are undertaking eligible Level 3 and some Level 4 courses. This funding route may be an option for students applying for one of the Level 3 Access to Higher Education courses.

More information about the Advanced Learner Loans can be found at www.gov.uk/advanced-learner-loan

For students who aren't able to access tuition fee loans, we offer flexible repayment options.

*If you are aged 19 – 23 years old and studying your first Level 3 course, there will be no cost for the course.

OTHER SUPPORT

College Bursary

Across all our Colleges we are able to support learners with those additional costs associated with learning e.g. travel and equipment. To be eligible you must have accessed the appropriate loan (Student Finance England or Advance Learner) and provide household income evidence.

Childcare Grant

Full-time Higher Education students with children can apply for a Childcare Grant to help with childcare costs for children under 15, or under 17 if they have special educational needs.

You must be eligible for student finance to apply for a Childcare Grant. For further information and eligibility criteria, please visit www.gov.uk/childcare-grant

Disability Students' Allowance (DSA)

Depending on which college you choose to study with, it may be possible to receive financial support to cover any additional study related costs you incur because of a disability. If you have a sensory or physical disability, a medical condition, a mental health difficulty or a specific learning disability, such as Dyslexia or Dyspraxia, then you may qualify to apply for support. DSA has no age limit and is available to new, existing, full-time and part-time students.

If you qualify for Disabled Students' Allowance you will need to have a DSA Needs Assessment to decide on the support you will need on your course. Once you have received your letter from the funding body advising you that you are now approved for funding, you will need to arrange a Needs Assessment appointment. To locate an assessment centre, search for "DSA assessment centre" in your preferred search engine, then enter your full residential or college/university postcode in the "Your Full Postcode" field. Once you have entered a postcode please select 'Search'. Your search will display assessment centres and outreach centres; you can receive a needs assessment at both types of centres. You can choose to attend whichever DSA-QAG registered centre that is most convenient for you to access for both location and appointment time.

OFFER FOR FAIR ACCESS (OFFA)

Through our OFFA Statement (Offer for Fair Access) students may be eligible for a bursary. The eligibility criteria for each student will be dependent on which college you study with. For more information, please visit the website of your chosen college or www.offa.org.uk



STUDENT SUPPORT SERVICES

Whether it's financial support, learning support or simply a friendly chat about the right course for you, our Student Support Services are at the heart of University Centre Rotherham (UCR) and our Colleges.

The Student Services teams will make sure that you have the information, advice and guidance you need during your time studying with us.

With student support services based at each of our campuses, you can access:

- Financial support and advice
- Careers and job search advice
- Course guidance
- Additional learning support
- Counselling
- Sexual health advice
- Disability support and advice
- Support to stop smoking
- Safeguarding information and guidance
- Student activities and enrichment information



ENTRY REQUIREMENTS



UCAS tariff points are used to set our entry requirements and make offers, and are also used by other universities and colleges. Tariff points are not the only way of applying for our courses, but we may express an offer as a number of points.

To help you understand how many points a qualification is worth, UCAS has a tariff calculator that you can use which can be found at www.ucas.com/ucas/tariff-calculator

AS LEVEL	A LEVEL	BTEC EXTENDED DIPLOMA	BTEC DIPLOMA	BTEC SUBSIDIARY DIPLOMA	BTEC CERTIFICATE	TARIFF POINTS
		D* D* D*				168
		D* D* D				160
		D* D D				152
		D D D				144
		D D M				128
		D M M	D* D*			112
			D* D			104
		M M M	D D			96
		M M P	D M			80
		M P P	M M			64
	A*			D*		56
	A	P P P	M P	D		48
	B					40
	C		P P	M		32
					D*	28
	D				D	24
A						20
B	E			P	M	16
C						12
D						10
					P	8
E						6

This table shows current tariff points for some popular qualifications. Further entry requirements are detailed on each course information page.

HOW TO APPLY

You can apply to study a course at any of our dedicated Higher Education campuses or colleges specialising in your chosen subject. Our sites include the newly constructed University Centre Rotherham, Rotherham College, North Notts College and Dearne Valley College.

APPLY THROUGH UCAS

You can apply for some of our courses via UCAS by visiting www.ucas.com/students/apply, using 'University Centre Rotherham', 'RNN Group' or the centre code 'R52'.

- Apply between 1st September and 15th January to be guaranteed equal consideration
- Apply between 16th January and 30th June for further consideration if the course you have applied for has not been fully filled
- Apply through **UCAS Clearing after 30th June**

APPLY THROUGH OUR WEBSITES

You can apply for a course directly by completing our online application form at any time throughout the year by visiting our websites:

University Centre Rotherham: ucr.rotherham.ac.uk

Rotherham College: www.rotherham.ac.uk

North Notts College: www.nnc.ac.uk

Dearne Valley College: www.dearne-coll.ac.uk

CONTACT DETAILS

University Centre Rotherham
Email: ucr@rotherham.ac.uk Phone: **01709 722806**

Rotherham College
Email: info@rotherham.ac.uk Phone: **01709 722777**

North Notts College
Email: contact@nnc.ac.uk Phone: **01909 504500**

Dearne Valley College
Email: learn@dearne-coll.ac.uk Phone: **01709 513355**

THE APPLICATION PROCESS

Following your application, you will be invited to a course interview to ensure that you are suitable for the course and understand our expectations around attendance, study and progression. You will also have the opportunity to meet the teaching team from the subject area you are applying for and ask any questions you may have.

Your English and maths skills may also be assessed to identify any additional support you may require to be successful on the course. With this there will also be an opportunity for you to disclose any additional learning support that you may require. Depending on the type of support you may require, you may be invited to meet a member of the Additional Learning Support team.

If your course interview has a successful outcome, you will receive either an offer or a conditional offer for a place on the course with us. A conditional offer may be subject to your exam results and references.



ACCOUNTING, BUSINESS AND MANAGEMENT

ACCOUNTING, BUSINESS AND MANAGEMENT

ACCOUNTING, BUSINESS AND MANAGEMENT



ACCOUNTING

ACCA (FIA) Diploma in Accounting and Business Level 4

 Delivered over two days or less

AWARDING BODY

ACCA

COURSE DURATION

1 year - part-time

COURSE FEE

£2,573 + ACCA registration fees

HOW TO APPLY

• Online application through the College websites

LOCATION

UCR TCC

COURSE OVERVIEW

The ACCA Diploma in Accounting and Business is the highest level of ACCA's Foundation in Accounting suite of qualifications. The course provides a solid platform for progression onto the Chartered papers with appropriate exemptions.

MODULES COVERED

- Foundations in Accountancy (FIA)
- Flexible Accountancy and Bookkeeping (FAB)
- Management Accounting (FMA)

WHY STUDY WITH US?

All members of the teaching team have worked in the industry and are nationally-recognised as an outstanding provider of accountancy tuition.

We have great links with the Rotherham and Barnsley Chamber of Commerce, local accountancy firms, the awarding bodies and national publications, all of whom support the work we are doing with future accountants.

CAREER OPPORTUNITIES

Upon successful completion of this course you could go into employment as a Management Accountant, Financial Accountant, Assistant Accountant, Payroll Officer, Senior Accounts Clerk, Financial Analyst or Ledger Supervisor.

ENTRY REQUIREMENTS

- Must have undertaken AAT/ACCA Levels 2 and 3 or have extensive knowledge working in an accounting function



NEW MANAGEMENT HIGHER OR DEGREE APPRENTICESHIPS IN DEVELOPMENT

We are currently developing new higher or degree apprenticeships within management. These apprenticeships will combine work with study and may include a work-based, academic or combined qualification or a professional qualification relevant to management. As these apprenticeships are still in development, please keep referring to the UCR website for further information.

ucr.rotherham.ac.uk



BUSINESS ENTERPRISE

Bachelor of Arts (Hons) in Business Enterprise

UCAS COURSE CODE: BUPEP

AWARDING BODY
University of Hull

COURSE DURATION
3 years - full-time
6 years - part-time

COURSE FEE
£6,900 per year (full-time)/£4,400 per year (part-time)

HOW TO APPLY

- Online application through the College websites
- UCAS

LOCATION	UCAS POINTS
UCR	64

COURSE OVERVIEW

This course covers the main functional areas of business so is broad in approach and will provide diverse employment opportunities across business disciplines.

Enterprise is also a focus of the course for a creative approach towards business and for those considering self-employment.

MODULES COVERED

Year 1

- The Marketing Planning Process
- Accounting and Finance
- Business Environment
- Introduction to Contemporary Business Practices
- Applications for Contemporary Business Practices
- Introduction to Enterprise

Year 2

- Engaging with Enterprising Organisations
- Business Law
- Research Methods
- Financial Literacy and Awareness
- Managing People
- Integrated Marketing Communications

Year 3

- Creating and Marketing the New Venture
- Dissertation

WHY STUDY WITH US?

This course will provide you with the opportunity to consider business start-up options and apply enterprise and innovation concepts to a particular business or sector or to a social enterprise sector.

It will enable you to ultimately decide your own study path which is directed towards your end goal which may be a business start-up or working for a business within a functional area of your choice.

We have developed strong links with a range of enterprise organisations which creates opportunities for you to undertake live briefs which link to enterprising projects in the local area.

CAREER OPPORTUNITIES

Upon successful completion of this course you could go into self-employment, join a business start-up, secure a higher role within a business environment such as finance or become a graduate trainee within an enterprise context.

ENTRY REQUIREMENTS

- Successful completion of a Level 3 programme (three A-Levels at C or above) or a BTEC (or equivalent) with a minimum Merit, Merit, Pass profile
- GCSE English and maths at C/4 or above (or Level 2 equivalent)
- Relevant work experience would also be an advantage and contribute to entry requirements for mature learner entry

TOURISM AND HOSPITALITY MANAGEMENT

Foundation Degree in
Tourism and Hospitality Management

UCAS COURSE CODE: N800

 Delivered over two days or less

AWARDING BODY

Sheffield Hallam University

COURSE DURATION

2 years - full-time
4 years - part-time

COURSE FEE

£6,900 per year

HOW TO APPLY

- Online application through the College websites
- UCAS

LOCATION

UCR

UCAS POINTS

48

COURSE OVERVIEW

This flexible programme has been designed in collaboration with employers, students and staff in the tourism and hospitality sector. It provides a robust programme to develop your skills and knowledge in the workplace and ultimately prepare you for a career in tourism and hospitality.

MODULES COVERED

Year 1 (Core modules)

- Self-Analysis and Career Development
- Fundamentals of Marketing
- Work Based Learning and Employability
- Customer Service in the Tourism and Hospitality Sector
- Event Management

Optional modules include

- International Travel Affairs (Tourism) or Licensed Trade Management (Hospitality)

Year 2 (Core modules)

- Managing Financial Resources
- Introduction to Business Research
- Leadership and Management

Optional modules include

- Geography and Tourist Destinations (Tourism) or International Food Management (Hospitality)
- Airport and Airline Operations (Tourism) or Food Production and Service Management (Hospitality)
- Tourism Development (Tourism) or Enterprise for Hospitality (Hospitality)

WHY STUDY WITH US?

Our industry-experienced teaching team employ a range of innovative teaching and learning methods to challenge you to improve your skills and knowledge.

You will be given excellent support in pursuing aspirational careers, with many former students progressing into employment with highly-regarded organisations within the tourism and hospitality industry.

You may have the opportunity to attend various trips and visits throughout the duration of your course to add relevant experience to the programme.

In addition, you will be entitled to Associate Member status of Sheffield Hallam University, offering access to their learning centres in Sheffield and use of the support services.

CAREER OPPORTUNITIES

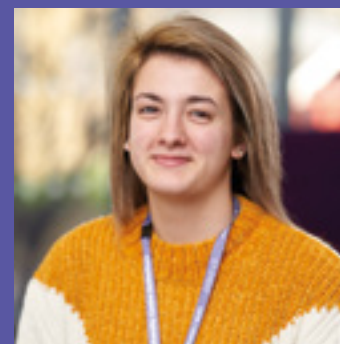
Upon successful completion of this course you could go into employment as an Events Co-ordinator, Travel Advisor, cabin crew staff, customer services, front of house staff or Hotel Manager or Supervisor.

Alternatively, top-up progression routes via Sheffield Hallam University for students who pass the Foundation Degree are International Tourism Management, International Hospitality Business Management, International Hotel and Resort Management and International Tourism and Hospitality Management.

Students will be guided by College and University staff through elective choice to the appropriate top-up.

ENTRY REQUIREMENTS

- A relevant Level 3 qualification
- GCSE English and maths at grade C/4 or above or equivalent
- Satisfactory references



SOPHIE WARHURST

Foundation Degree in Tourism
and Hospitality Management

"I would recommend UCR to others as it is a comfortable and welcoming place to learn and there is lots of support available."



CHLOE CARR

Foundation Degree in Tourism
and Hospitality Management

"UCR is great for those who want to stay close to home. It also gives you the flexibility to work whilst studying."

ANIMAL MANAGEMENT

ANIMAL MANAGEMENT

ANIMAL MANAGEMENT





ANIMAL MANAGEMENT

Higher National Certificate -
Diploma Level 4 in Animal Management

Higher National Diploma -
Diploma Level 5 in Animal Management

 Delivered over two days or less

UCAS COURSE CODE (HNC): D3T4

UCAS COURSE CODE (HND): DN32

AWARDING BODY

Pearson BTEC

COURSE DURATION

1 year - full time (HNC)

1 year - full time (HND)

COURSE FEE

Level 4 £6,900 per year/Level 5 £6,900 per year

HOW TO APPLY

- Online application through the College websites
- UCAS

LOCATION

DC

COURSE OVERVIEW

The course provides you with a wealth of transferable experience and employability skills either to take you straight into industry or onto Higher Education.

You will also build confidence both with academic standing and working practically within real animal industry scenarios. You will have access to work with over 60 animal species.

Former students have stated that they felt ready for the next step of their career and were fully supported to achieve to the best of their ability.

MODULES COVERED

Level 4

- Health and Welfare
- Animal Behaviour
- Managing a Research Project
- Animal Husbandry
- Managing Animal Collections
- Animal Nursing
- Animal Nutrition
- Business Environment

Level 5

- Biological Principles
- Research Project
- Anthrozoology
- Therapy and Rehabilitation
- Evolution and Adaptation
- Advanced Patient Care
- Breeding and Genetics

WHY STUDY WITH US?

At our Dinnington campus, we have access to a large and varied animal collection with over 200 animals. These include large and small exotic mammals, companion mammals, aquatics, amphibians, reptiles, invertebrates, farm livestock, horses and avian species.

Our lecturing staff have a wide range of expertise, having worked in a variety of animal-related industries and have many years of experience.

As part of the course, there will be an opportunity to take part in a two-week residential conservation programme in South Africa.

CAREER OPPORTUNITIES

Upon successful completion of these courses, you could go into employment as an Animal Collection/ Zoo Manager, Animal Technician, Kennel Manager, work within animal welfare and rescue or become self-employed.

With further study, you can also pursue employment in veterinary nursing or marine biology.

ENTRY REQUIREMENTS

- A relevant Level 3 qualification
- Five GCSEs grade C/4 or above including English, maths and science
- Mature students will be evaluated on an individual basis



ART AND DESIGN

Foundation Diploma in Art and Design

UCAS COURSE CODE: W100

AWARDING BODY

University of the Arts London

COURSE DURATION

1 year - full-time

COURSE FEE

£6,900 per year

HOW TO APPLY

- Online application through the College websites
- UCAS

LOCATION

TCC RP

COURSE OVERVIEW

This intensive one-year Foundation programme provides you with a valuable introduction to a wide range of creative disciplines, allowing you to experiment before specialising in your chosen area.

By choosing this qualification you will perfect your skills and build a portfolio of artwork to support your application to a degree-level qualification. With a focus on innovation and creativity, this course bridges the gap between study at Level 3 and degree, enabling you to progress onto a range of prestigious, highly-competitive degree courses.

This course is designed to improve your opportunities when applying for university courses and is a stepping stone to a degree course.

On completion you will gain the following UCAS Tariff points: 80 for a Pass, 96 for a Merit and 120 for a Distinction.

MODULES COVERED

- Art and Design Research Methods
- Art and Design Ideas and Development
- Art and Design Materials and Methods
- Art and Design Evaluation and Reflection
- Integrated Art and Design Research
- Preparation for Progression in Art and Design
- Project Proposal and Realisation in Art and Design

WHY STUDY WITH US?

The course is lively, stimulating and enriched with a series of studio projects, lectures, talks from industry professionals and gallery visits, all of which encourage creative production and self-reliant learning.

We provide smaller study groups with training from industry professionals in industry settings. Our connections will allow you to gain the latest skills and knowledge needed to be successful in the art and design industry.

CAREER OPPORTUNITIES

Upon successful completion of this course you could go into employment as a Fine Artist, Animator, Graphic Designer, Textiles Designer, Architect, Interior Designer or Product Designer.

ENTRY REQUIREMENTS

A combination of the following qualifications to meet the required UCAS points:

- A-Level at grade C or above in Art or two AS Levels at grade C or above to include Art
- Successful completion of BTEC Level 3 Extended Diploma in Art and Design
- Successful completion of a GNVQ Level 3 qualification

GRAPHIC DESIGN

Foundation Degree in Graphic Design

AWARDING BODY

Sheffield Hallam University

COURSE DURATION

2 years - full-time
4 years - part-time

COURSE FEE

£6,900 per year

HOW TO APPLY

- Online application through the College websites
- UCAS

LOCATION

UCR

UCAS POINTS

64

COURSE OVERVIEW

This course is designed to provide you with an overview of the whole design and production process. The programme will equip you with the knowledge, understanding and skills to enter a range of careers in the graphic arts industries. Work-based learning is at the heart of this course and is embedded into most modules.

MODULES COVERED

- Introduction to Design
- Graphic Image Making and Communication
- Principles of Typography
- Contextual Investigation
- Corporate Identity
- Design for Advertising
- Typographic Design Ideas
- Design for the Digital Online Environment
- Graphics and the Creation of a Brand Image
- Work-based Design Projects
- Specialist Creative Response

WHY STUDY WITH US?

Our studio space provides and reflects the professional workplace environment. The delivery of the programme is designed to reflect the balance of skills and knowledge needed to work competently within the graphic arts industries, ensuring that the qualification supports both workplace and educational progression.

A high level of collaboration with partners from industry ensures that employers and practitioners are involved in the design and regular review of modules and assignments. Industry-led briefs and commercial project work are integrated into modules and assignments.

CAREER OPPORTUNITIES

With successful completion of this course you could go into employment in graphic design, teaching or marketing and management.

Alternatively, you can progress onto the final year of the BA (Hons) Graphic Communications Design Degree course or other degrees at university.

ENTRY REQUIREMENTS

- A relevant Level 3 qualification or substantial relevant experience
- GCSE English and maths at grade C/4 or above or equivalent
- A portfolio of work
- All applicants who are non-native English speakers, or who have not studied the final two years of school in English, must have an IELTS score of 6.0 or above



HUMAIRAA HUSSAIN

Foundation Degree in Graphic Design

"I enjoy coming to UCR because I get to learn new techniques and skills in the area I love."



TOMMY WILLIAMS-BLANK

Foundation Degree in Graphic Design

"I chose UCR as it is very local to where I live and is just a ten minute bus journey away. I mostly enjoy the graphic element of the course as I like to be more practical and experimental."

GRAPHIC COMMUNICATION DESIGN

Bachelor of Arts (Hons) in Graphic Communication Design (Top-up)

UCAS COURSE CODE: W2A3

AWARDING BODY

Sheffield Hallam University

COURSE DURATION

1 year - full-time
2 years - part-time

COURSE FEE

£6,900 per year

HOW TO APPLY

- Online application through the College websites
- UCAS

LOCATION

UCR

UCAS POINTS

64

COURSE OVERVIEW

The course will equip you with the necessary knowledge, understanding and skills required for success and future employment in the graphic design sector.

The teaching team have a range of experience from practice within the industry with local, national and international networks.

MODULES COVERED

- Visual Research: Specialist Investigation
- Dissertation
- Graduation Project Short: Professional Practice
- Graduation Project Long: Visual Communication

WHY STUDY WITH US?

This course will provide you with an environment for creative experiment and academic understanding.

All of our tutors are experienced graphic designers from within industry. You will be based in our professional studio spaces which provide a stimulating learning environment, allowing you to develop your own creative strengths.

We have professional guest speakers from industry in addition to visits to galleries, exhibitions and residential travel abroad.

CAREER OPPORTUNITIES

After successful completion of this course you can pursue employment at design consultancies and agencies as a Graphic Designer, Studio Manager, Creative Director, Freelance Designer or alternatively you can go into self-employment.

ENTRY REQUIREMENTS

- A relevant Level 5 qualification
- GCSE English and maths at grade C/4 or above or equivalent
- Successful interview with a course tutor
- A portfolio of work
- All applicants who are non-native English speakers, or who have not studied the final two years of school in English, must have an IELTS score of 6.0 or above

CARING PROFESSIONS

CARING PROFESSIONS

CARING PROFESSIONS



EARLY CHILDHOOD STUDIES

Foundation Degree in Early Childhood Studies

UCAS COURSE CODE: 8Z9C

 Delivered over two days or less

AWARDING BODY
University of Hull

COURSE DURATION
3 years - part-time

COURSE FEE
£4,400 per year

HOW TO APPLY

- Online application through the College websites
- UCAS

LOCATION

UCR **WC**

COURSE OVERVIEW

The course will provide an innovative response to specific sector needs for the professional development of childminders, pre-school learning leaders and early years practitioners.

MODULES COVERED

Level 4

- Academic Study Skills
- Early Childhood Development
- Professional Reflective Practice: Listening and Learning Journeys
- Safeguarding and Promoting the Well-being of Young Children
- Social Inclusion and Early Childhood Education
- Professional Reflective Practice: Learning Journeys

Level 5

- Approaches to Research in Early Childhood Studies
- Children's Play and Creativity
- Professional Reflective Practice: Transitions and Critical Reflection on Alternative Pedagogies
- Research Report
- Inclusive Strategies for Children with Special Educational Needs and Disability (SEND)
- Professional Reflective Practice: Critical Reflection on Alternative Pedagogies

WHY STUDY WITH US?

We have an excellent reputation within the early years and childcare sector. Our highly skilled and experienced staff team, the Colleges' nursery provision and links with employers in the sector will support you to achieve your full potential.

CAREER OPPORTUNITIES

Upon successful completion of this course you could go into employment as a Nursery Manager, Pre-school Leader, Teaching Assistant, Early Years Practitioner or a Family Support Worker.

ENTRY REQUIREMENTS

- A relevant Level 3 qualification in Early Years with license to practice status
- GCSE English and maths at grade C/4 or above or equivalent
- Hold a current Enhanced DBS
- Be employed within the sector in a relevant setting and role
- ICT access and skills to support online learning elements of the programme
- All applicants who are non-native English speakers, or who have not studied the final two years of school in English, must have an IELTS score of 6.0 or above



SARAH ATTACK
Foundation Degree in Early Childhood Studies

"I love learning amongst my peer group all whilst being within a fun environment. It's also great that we benefit from the in-depth knowledge and experience from our tutors."

EARLY CHILDHOOD STUDIES (TOP-UP)

Bachelor of Arts (Hons) in
Early Childhood Studies (Top-up)

SUBJECT TO VALIDATION

 Delivered over two days or less

AWARDING BODY
University of Hull

COURSE DURATION
18 months - part-time

COURSE FEE
£6,900

HOW TO APPLY

- Online application through the College websites
- UCAS

LOCATION

UCR WC

UCAS POINTS

64

COURSE OVERVIEW

This course is tasked to support students who are already practitioners to develop a wide range of skills and knowledge for the employment market.

Students on this course will enjoy a creative and innovative approach to learning.

MODULES COVERED

Year 1

- International Perspectives in Education and Care
- Professional Practice Working with 0-5 years
- Creativity in Early Childhood
- Leadership and Management
- Independent Research Project

Year 2

- Dissertation

WHY STUDY WITH US?

We have an excellent reputation within the Early Years and Childcare Sector. Our highly skilled and experienced staff team, the Colleges' nursery provision and links with employers in the sector will support you to achieve your full potential.

CAREER OPPORTUNITIES

Upon successful completion of your course you could go into employment as a Family Support Worker or be a Manager in the private, voluntary, health or maintained sector.

We recognise that you may wish to enter teaching or a similar profession on graduation. Throughout your degree you will develop skills, expertise and knowledge that will enable you to apply, with confidence for initial Teacher Training or a range of other professional education routes.

ENTRY REQUIREMENTS

- A relevant Level 5 academic study qualification
- GCSE grade C/4 or above in English and maths

COUNSELLING PRACTICE

AIM Awards Level 4 Diploma in
Counselling Practice

 Delivered over two days or less

AWARDING BODY
AIM Awards

COURSE DURATION
2 years - part-time

COURSE FEE
£2,882 per year

HOW TO APPLY

- Online application through the College websites

LOCATION

WC

COURSE OVERVIEW

This course will help you to develop your understanding of theory and translate this into practical work in a voluntary counselling placement.

The course gives you a core model with which to practice and increase self-awareness.

MODULES COVERED

Year 1

- Embarking on Practice and Psychodynamic Theory

Year 2

- Transactional Analysis and Counselling Practicum

WHY STUDY WITH US?

We have an experienced teaching team with a good reputation for ensuring that you receive a quality teaching and learning experience. All counselling teachers are qualified counsellors and registered members of the British Association for Counselling and Psychotherapy (BACP).

You will be supported in your studies by the teaching team. You will also receive help accessing placements and supervisors.

CAREER OPPORTUNITIES

This qualification provides a sound basis towards practitioner status and provides a wide range of employment opportunities in the public health sector and private voluntary sectors for counselling professionals.

The accreditation of this qualification will also provide opportunities to progress onto Higher Education.

ENTRY REQUIREMENTS

- Level 3 qualification in Counselling
- GCSE English and maths at grade C/4 or above or equivalent
- Other appropriate/relevant experience or qualification



CARLY JOHNSON

Foundation Degree (FdSc) in Professional Practice in Health and Social Care

“I really enjoy learning new skills and developing a better understanding of professional practice. I chose UCR as the course was suitable to my home life with contact time only being a few days a week.”

PROFESSIONAL PRACTICE IN HEALTH AND SOCIAL CARE

Foundation Degree (FdSc) in Professional Practice in Health and Social Care

UCAS COURSE CODE: L5H8

AWARDING BODY
Sheffield Hallam University

COURSE DURATION
2 years - full-time

COURSE FEE
£6,900 per year

HOW TO APPLY

- Online application through the College websites
- UCAS

LOCATION	UCAS POINTS
UCR	48

COURSE OVERVIEW

This course has been designed in response to the rapidly changing workforce demands and policy initiatives aimed at modernising services and improving quality, productivity and efficiency. It covers both the academic and work-based competencies that are relevant to a multitude of roles within health and social care settings.

MODULES COVERED

Year 1

- Work Based Learning 1 Academic/Practice
- Reflective and Personal Development Skills
- Essential Sciences for Person-centred Care
- Integrated Holistic Assessment and Delivery of Health and Social Care Interventions
- Foundations for Effective Collaborative Practice

Year 2

- Work Based Learning 2 Academic/Practice
- Promoting Health, Wellbeing and Independence
- Using and Evaluating Evidence to Inform Practice
- Leadership and Management

WHY STUDY WITH US?

The course offers an intimate learning environment with groups of no more than 25 learners. The tutors are experienced in teaching at this level of academia and have relevant experience within the health and social care sector.

In addition to achieving the relevant academic qualifications, the course includes a placement element to ensure that you can advance your practical skills as well.

CAREER OPPORTUNITIES

Students who successfully complete the FdSc have the opportunity to progress to BSc (Hons) Health and Social Care Studies Top Up at Sheffield Hallam University as well as being eligible to apply for a health or social care professional course.

Students can apply for entry to Level 5 of diagnostic radiography, adult nursing, occupational therapy, physiotherapy, paramedic practice or social work. In addition they can apply for entry at Level 4 for mental health or child nursing, combined learning disabilities nursing and social work, midwifery, operating department practice and radiotherapy and oncology.

ENTRY REQUIREMENTS

- A relevant Level 3 qualification
- GCSE English and maths at grade C/4 or above or equivalent

COMPUTING AND DIGITAL

COMPUTING AND DIGITAL

COMPUTING AND DIGITAL



COMPUTING

Higher National Certificate –
Diploma Level 4 in Computing

Higher National Diploma –
Diploma Level 5 in Computing

UCAS COURSE CODE: C001

AWARDING BODY

Pearson BTEC

COURSE DURATION

1 year - full-time
2 years - part-time

COURSE FEE

£6,900 per year (full-time)/£3,450 per year (part-time)

HOW TO APPLY

- Online application through the College websites
- UCAS

LOCATION

UCR

UCAS POINTS

64

COURSE OVERVIEW

This programme has been developed in order to enable you to engage with the exciting and dynamic challenges presented by the computing sector. The aim of the programme is to offer the next generation of computing students the opportunity to become confident, capable and above all, professional.

This is a contemporary, cutting edge programme aimed at students eager to follow a career in various job roles within the high-tech and ever changing world of computing.

MODULES COVERED

- Programming
- Networking
- Professional Practice
- Database Design and Development
- Security
- Managing a Successful Computing Project (Pearson-set)
- Computer Systems Architecture
- Website Design and Development

WHY STUDY WITH US?

We provide smaller study groups with training from industry professionals in industry settings. Our connections will allow you to gain the latest skills and knowledge needed to be successful in the computing industry.

The teaching team are very experienced, approachable and supportive and are fully committed to helping you achieve to the best of your ability.

We also have a range of real-life projects that you would be invited to work on as part of your programme. You will have access to modern hardware and industry-standard software in order to prepare you for your transition to employment.

CAREER OPPORTUNITIES

Upon successful completion of this course you could go into employment as a Website Designer, Software Engineer, Network Technician, Data Analyst, Internet Marketer or Programmer.

ENTRY REQUIREMENTS

- GCSE English and maths at grade C/4 or equivalent
- 64 UCAS points from a minimum of two A-Levels (or equivalent) in a related subject or 60 Access to HE credits (of which a minimum of 45 must be at Level 3) in a related subject
- Applicants who lack formal qualifications will be set an appropriate piece of work that will take into account their academic potential and relevant experience
- Applicants may also be admitted with credit for prior certified learning (APcL) or work/life experience or other uncertified learning (APeL)
- All applicants who are non-native English speakers, or who have not studied the final two years of school in English, must have an IELTS score of 6.0 or above
- All applicants will attend a one-week summer school



LATIFAH ALI

Bachelor of Science (Hons) in Computing and Systems Development

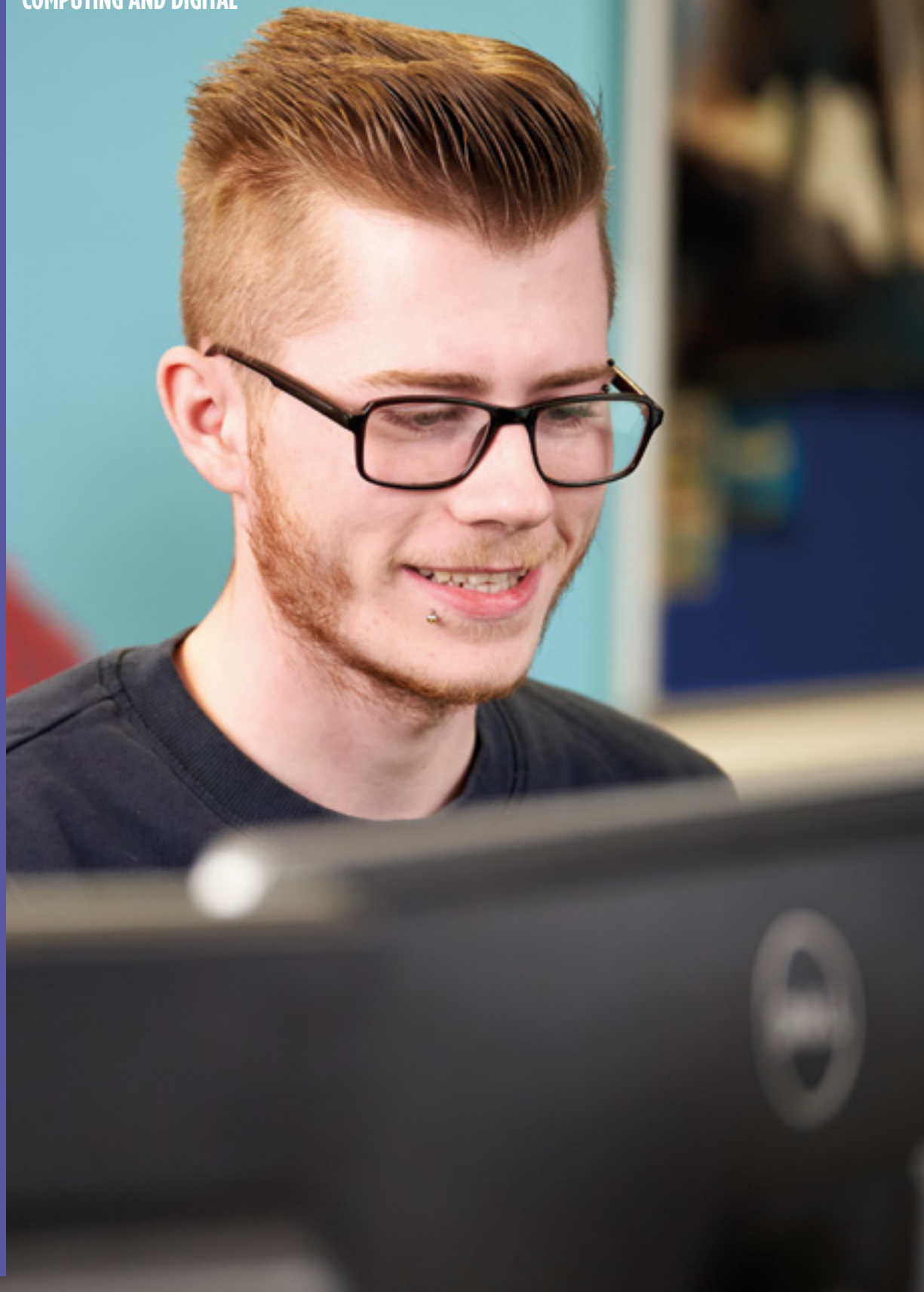
“UCR is convenient for me to get to, has smaller groups to learn amongst, engaging lessons and we receive more one-to-one support from our tutors.”



ALEX MACHIN

Bachelor of Science (Hons) in Computing and Systems Development

“The tutors here are excellent, have a wide variety of knowledge in their fields and are very supportive.”



COMPUTING AND SYSTEMS DEVELOPMENT

Bachelor of Science (Hons) in
Computing and Systems Development

AWARDING BODY
University of Hull

COURSE DURATION
3 years - full-time
6 years - part-time

COURSE FEE
£6,900 per year

HOW TO APPLY

- Online application through the College websites
- UCAS

LOCATION

UCR WC

UCAS POINTS

64

COURSE OVERVIEW

This programme has been developed to enable you to engage with the exciting and dynamic challenges presented by the computing and systems development sector. The aim of the programme is to offer the next generation of computing students the opportunity to become confident, capable and above all, professional.

This is a contemporary, cutting edge programme aimed at students eager to follow a career in various job roles within the high-tech and ever changing world of computing and systems development.

MODULES COVERED

Year 1

- Academic Excellence
- Computer Architecture
- Fundamentals of Programming
- Website Design
- User Interface Design

Optional modules include

Software Design and Development (OOP), Networking Fundamentals and Computer Systems

Year 2

- Computer Communications and Networks
- Web Application Development
- Business Applications of Social Media
- Business Systems Modelling

Optional modules include

Data Structures, Algorithms and System Security Management.

Year 3

- Cyber Security
- Intelligent Systems
- Web Analytics and Information Management
- Dissertation

Optional modules include

Mobile App Development, Cloud Computing and E-commerce Strategy.

WHY STUDY WITH US?

We provide smaller study groups with training from industry professionals in industry settings. Our connections will allow you to gain the latest skills and knowledge needed to be successful in the computing and systems development industry.

The teaching team are very experienced, approachable and supportive and are fully committed to helping you achieve to the best of your ability.

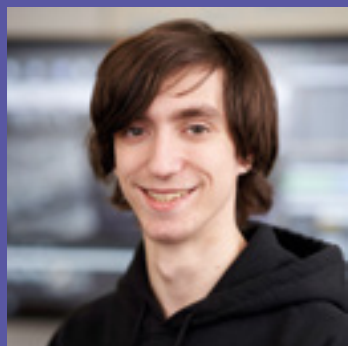
We also have a range of real-life projects that you would be invited to work on as part of your programme. You will have access to modern hardware and industry-standard software in order to prepare you for your transition to employment.

CAREER OPPORTUNITIES

Upon successful completion of this course you could go into employment as a Website Designer, Software Engineer, Network Technician, Data Analyst, Internet Marketer or Programmer.

ENTRY REQUIREMENTS

- GCSE English and maths at grade C/4 or equivalent
- 64 UCAS points from a minimum of two A-Levels (or equivalent) in a related subject or 60 Access to HE credits (of which a minimum of 45 must be at Level 3) in a related subject
- Applicants who lack formal qualifications will be set an appropriate piece of work that will take into account their academic potential and relevant experience
- Applicants may also be admitted with credit for prior certified learning (APcL) or work/life experience or other uncertified learning (APeL)
- All applicants who are non-native English speakers, or who have not studied the final two years of school in English, must have an IELTS score of 6.0 or above
- All applicants will attend a one-week summer school



JOSHUA BARTHROP
 Foundation Degree in
 Games Design

“I love that we are able to use the software and equipment they use within the games industry.”

GAMES DESIGN

Foundation Degree in Games Design

AWARDING BODY
 Sheffield Hallam University

COURSE DURATION
 2 years - full-time
 4 years - part-time

COURSE FEE
 £6,900 per year

HOW TO APPLY
 • Online application through the College websites
 • UCAS

LOCATION	UCAS POINTS
UCR	64

COURSE OVERVIEW

This course has been carefully designed in consultation with employers within the sector to ensure that the content represents the skills and knowledge you will need to be able to directly meet the needs of employers within games design.

The focus will be around the development of practical skills which can be applied directly to tasks which are contextualised and able to test your skills in the real world.

WHY STUDY WITH US?

All staff have strong links with industry and the qualification has been designed with employers at the heart of the content. We use state-of-the-art equipment and industry-standard software.

We also have a range of real-life projects that you would be invited to work on as part of your programme.

CAREER OPPORTUNITIES

Upon successful completion of this course you could go into employment as a Games Designer, Games Animator, Level Editor, Assistant Producer or Creative Director.

Alternatively, you can progress onto further study to top-up your degree.

MODULES COVERED

Year 1

- Games Design Theory
- 3D Environments for Computer Games
- Introduction to Games Mechanics
- Visual Concepts for Games
- 3D Modelling
- Games Design Project

Year 2

- 3D Character Modelling
- Advanced Gameplay Development
- Animation Techniques
- Group Game Design Project
- Human Computer Interfaces for Computer Games
- Sound Design for Games

ENTRY REQUIREMENTS

- GCSE English and maths at grade C/4 or equivalent
- 64 UCAS points from a minimum of two A-Levels (or equivalent) in a related subject or 60 Access to HE credits (of which a minimum of 45 must be at Level 3) in a related subject
- Applicants who lack formal qualifications will be set an appropriate piece of work that will take into account their academic potential and relevant experience
- Applicants may also be admitted with credit for prior certified learning (APcL) or work/life experience or other uncertified learning (APeL)
- All applicants who are non-native English speakers, or who have not studied the final two years of school in English, must have an IELTS score of 6.0 or above
- All applicants will attend a one-week summer school

CRIMINOLOGY AND PUBLIC SERVICES

CRIMINOLOGY AND PUBLIC SERVICES

CRIMINOLOGY AND PUBLIC SERVICES





APPLIED JUSTICE AND SOCIAL SCIENCE

Foundation Degree in Applied Justice and Social Science

AWARDING BODY
University of Hull

COURSE DURATION
2 years - full-time

COURSE FEE
£6,900 per year

HOW TO APPLY

- Online application through the College websites
- UCAS

LOCATION	UCAS POINTS
DV	64

COURSE OVERVIEW

This programme of study aims to support you to become a forward-thinking social scientist with a critical understanding of judicial, social and psychological disciplines. You will gain the ability to analyse the 'status-quo' in the public services sector and drive forward new and innovative thinking and approaches to change in challenging times.

The embedding of work placements will allow for experiential learning to take place and for you to examine how theory can be applied in employability settings. You will be required to undertake a minimum of 100 hours work placement as part of your programme of study.

Academic tutorials will be integral to allow for you to be supported in making the transition onto higher-level studies to then develop into a self-managing and motivated individual with an independent approach to learning.

MODULES COVERED

Level 4

- Introduction to Psychology
- Crime and Social Studies
- Introduction to Law
- Professional Practice and Partnership Working
- Major Incident Management
- Social Policy

Level 5

- Leadership and Management Systems
- Safeguarding and Promoting Health and Wellbeing
- Criminal and Forensic Psychology
- Criminal Law
- Youth Justice
- Research Methods

CAREER OPPORTUNITIES

Upon successful completion of this course you could go into employment in the public or private sector ranging from police, prisons, probation services, local government or civil service and youth and social work.

ENTRY REQUIREMENTS

- A relevant Level 3 qualification
- GCSE English and maths at grade C/4 or above or equivalent
- Applicants who do not hold the relevant Level 3 qualifications or equivalents will have the opportunity to request an interview with the admissions tutor to ensure that they are able to meet the academic challenges of the programme
- Students would be asked to outline their previous work experience and how they have maintained up-to-date knowledge and skills in their current role. This would include evidence of CPD activities undertaken and recognition of prior learning may be recognised
- Mature applicants without formal qualifications but who possess relevant life experience will be considered for interview
- IELTS score of 6.5 is required for the programme

WHY STUDY WITH US?

The approaches to teaching and learning methods employed in this programme are designed to build your confidence and enable you to become autonomous in your academic development.

You will be encouraged to take ownership and responsibility for your own learning. Enquiry-based learning will be used to develop your research skills and the breadth and depth of your understanding of the justice system and related applied social sciences.



EDUCATION AND PROFESSIONAL DEVELOPMENT

Bachelor of Arts (Hons) in Education and Professional Development (Top-up)

 Delivered over two days or less

AWARDING BODY
University of Hull

COURSE DURATION
2 years - part-time

COURSE FEE
£4,400 per year

HOW TO APPLY

- Online application through the College websites
- UCAS

LOCATION

UCR

COURSE OVERVIEW

This is a two-year, blended learning top-up programme involving attendance at monthly day schools with an expectation of independent study and support by individual tutorials with the module tutor. In addition to this, you will be supported in your studies with academic support from our libraries.

The programme's aim is to enhance your knowledge and skills in three broad areas; critical reflection, policy and practice and research and academic scholarship.

MODULES COVERED

Year 1

- Personal and Professional Development
- Research and Academic Study Skills
- Enhancing Teaching and Learning
- Working in Teams

Year 2

- Dissertation
- Professional Reflective Review

WHY STUDY WITH US?

We have an experienced teaching team who have a good reputation for ensuring you receive a quality teaching and learning experience.

Not only will you be supported in your studies by the teaching team, you will receive help from our learning centre staff in relation to academic and research skills.

Modern teaching rooms are also used with access to current software and a range of ICT resources.

CAREER OPPORTUNITIES

Upon successful completion of this course you could go into employment as a Programme Leader, Curriculum Leader, Curriculum Manager or as a Teaching and Learning Development Officer.

ENTRY REQUIREMENTS

- A Certificate in Education or equivalent, or a relevant Foundation degree, as well as having two years full-time experience in an educational setting, or part-time equivalent
- There is potential for students with five years' teaching/training experience who have not completed a Certificate in Education or equivalent qualification to be considered

CERTIFICATE OF EDUCATION: IN-SERVICE

Certificate of Education to Teach in the Lifelong Learning Sector: In-Service

 Delivered over two days or less

AWARDING BODY
University of Hull

COURSE DURATION
2 years - part-time

COURSE FEE
£3,450 per year

HOW TO APPLY

- Online application through the College websites

LOCATION

UCR

COURSE OVERVIEW

This two-year course will help you to develop your teaching skills, reflect on current ideas about education and training and to creatively explore the professional opportunities open to you.

Much of the course is focused on practical teaching. You will gain experience of learning and teaching alongside other teachers and trainers, with support from your tutors.

MODULES COVERED

- Principles and Practice in Post-compulsory Education
- Practical Teaching and Learning
- Exploring Specialist Teaching
- Advanced Professional Practice in Context

Plus, completion of a Practical Teaching File demonstrating evidence of teaching skills development.

WHY STUDY WITH US?

We have an experienced teaching team who have a good reputation for ensuring you receive a quality teaching and learning experience.

Not only will you be supported in your studies by the teaching team, you will receive help from our learning centre staff in relation to academic and research skills.

Modern teaching rooms are also used with access to current software and a range of ICT resources.

CAREER OPPORTUNITIES

Upon successful completion of this course you could go into employment as a College Lecturer or Teacher, Curriculum Team Leader, a Teacher in uniformed services or in learning and development. You could also be a Teacher with adult and community learning as well as charitable organisations.

ENTRY REQUIREMENTS

- A Level 3 or equivalent qualification in your subject area
- You should be in paid employment as a teacher or trainer for a minimum of 50 hours per year (100 hours in total) at a recognised training or education establishment. Voluntary teaching/training may be acceptable (please ask for more details)
- A current, valid and clean DBS
- Qualification or competence at Level 2 in Literacy and Numeracy (e.g. GCSE, Functional Skills)
- A mentor suitably experienced in teaching your subject specialism

CERTIFICATE OF EDUCATION: PRE-SERVICE

Certificate of Education to Teach in the Lifelong Learning Sector: Pre-Service

 Delivered over two days or less

AWARDING BODY
University of Hull

COURSE DURATION
1 year - full-time

COURSE FEE
£6,900 per year

HOW TO APPLY
• Online application through the College websites

LOCATION
UCR

COURSE OVERVIEW

This one-year course is aimed at those who are not currently working within a teaching environment.

The course will help you to develop your teaching skills, reflect on current ideas about education and training and creatively explore the professional opportunities open to you.

MODULES COVERED

- Principles and Practice in Post-compulsory Education
- Practical Teaching and Learning
- Exploring Specialist Teaching
- Advanced Professional Practice in Context

Plus, completion of a Practical Teaching File demonstrating evidence of teaching skills development.

WHY STUDY WITH US?

We have an experienced teaching team who have a good reputation for ensuring you receive a quality teaching and learning experience.

Not only will you be supported in your studies by the teaching team, you will also receive help from our learning centre staff in relation to academic and research skills.

Modern teaching rooms are also used with access to current software and a range of ICT resources.

CAREER OPPORTUNITIES

Upon successful completion of this course you could go into employment as a College Lecturer or Teacher, Curriculum Team Leader, a Teacher in uniformed services or in learning and development. You could also be a Teacher with adult and community learning as well as charitable organisations.

ENTRY REQUIREMENTS

- A Level 3 certificate in your subject specialism (or substantial experience)
- A current, valid and clean DBS
- Competence at Level 2 in Literacy and Numeracy (e.g. GCSE, Functional Skills)
- A mentor suitably experienced in teaching your subject specialism
- Preparation to undertake a placement with a minimum of 100 hours teaching experience



SALLY PARKER

**Certificate of Education:
Pre-Service**

"The course is run by a brilliant team of tutors who have a great deal of knowledge and experience."



MATTHEW THOMPSON

PGCE: Pre-Service

"I love the opportunities I've been given to develop my skills and knowledge whilst gaining professional experience on placement. I would recommend UCR to others as you can gain professional and quality training locally."

PgCE/PGCE: IN-SERVICE

Professional Graduate Certificate in Education (PgCE) to Teach in the Lifelong Learning Sector: In-Service

Post Graduate Certificate in Education (PGCE) to Teach in the Lifelong Learning Sector: In-Service

 Delivered over two days or less

AWARDING BODY
University of Hull

COURSE DURATION
2 years - part-time

COURSE FEE
£3,450 per year

HOW TO APPLY
• Online application through the College websites

LOCATION

UCR

COURSE OVERVIEW

This two-year course will help you to develop your teaching skills, reflect on current ideas about education and training and creatively explore the professional opportunities open to you.

Much of the course is focused on practical teaching. You will gain experience of learning and teaching alongside other teachers and trainers, with support from your tutors.

MODULES COVERED

- Principles and Practice in Post-compulsory Education
- Practical Teaching and Learning
- Exploring Specialist Teaching
- Advanced Professional Practice in Context

Plus, completion of a Practical Teaching File demonstrating evidence of teaching skills development.

WHY STUDY WITH US?

We have an experienced teaching team who have a good reputation for ensuring you receive a quality teaching and learning experience.

Not only will you be supported in your studies by the teaching team, you will also receive help from our learning centre staff in relation to academic and research skills.

Modern teaching rooms are also used with access to current software and a range of ICT resources.

CAREER OPPORTUNITIES

Upon successful completion of this course you could go into employment as a College Lecturer or Teacher, Curriculum Team Leader, a Teacher in uniformed services or in learning and development. You could also be a Teacher with adult and community learning as well as charitable organisations.

ENTRY REQUIREMENTS

- You should be in paid employment as a teacher or trainer for a minimum of 50 hours per year (100 hours in total) at a recognised training or education establishment. Voluntary teaching/training may be acceptable (please ask for more details)
- A UK Bachelor's Degree or equivalent, relevant work experience is required for vocational subjects
- A current, valid and clean DBS
- Qualification or competence at Level 2 in Literacy and numeracy (e.g. GCSE, Functional Skills)
- A mentor suitably experienced in teaching your subject specialism

PgCE/PGCE: PRE-SERVICE

Professional Graduate Certificate in Education (PgCE) to Teach in the Lifelong Learning Sector: Pre-Service

Post Graduate Certificate in Education (PGCE) to Teach in the Lifelong Learning Sector: Pre-Service

 Delivered over two days or less

AWARDING BODY
University of Hull

COURSE DURATION
1 year - full-time

COURSE FEE
£6,900 per year

HOW TO APPLY
• Online application through the College websites

LOCATION

UCR

COURSE OVERVIEW

This one-year course is aimed at those who are not currently employed within a teaching environment. The course will help you to develop your teaching skills, reflect on current ideas about education and training and creatively explore the professional opportunities open to you.

Much of the course is focused on practical teaching. You will gain experience of learning and teaching alongside other teachers and trainers, with support from your tutors.

MODULES COVERED

- Principles and Practice in Post-compulsory Education
- Practical Teaching and Learning
- Exploring Specialist Teaching
- Advanced Professional Practice in Context

Plus, completion of a Practical Teaching File demonstrating evidence of teaching skills development..

WHY STUDY WITH US?

We have an experienced teaching team who have a good reputation for ensuring you receive a quality teaching and learning experience.

Not only will you be supported in your studies by the teaching team, you will receive help from our learning centre staff in relation to academic and research skills.

Modern teaching rooms are used with access to current software and a range of ICT resources.

CAREER OPPORTUNITIES

Upon successful completion of this course you could go into employment as a College Lecturer or Teacher, Curriculum Team Leader, a Teacher in uniformed services or in learning and development. You could also be a Teacher with adult and community learning as well as charitable organisations.

ENTRY REQUIREMENTS

- A UK Bachelor's Degree or equivalent. Relevant work experience is desirable for vocational subjects
- A current, valid and clean DBS
- Competence at Level 2 in Literacy and Numeracy (e.g. GCSE, Functional Skills)
- Preparation to undertake a placement with a minimum of 100 hours teaching experience
- A mentor suitably experienced in teaching the subject specialism



IF YOU ARE INTERESTED IN BECOMING AN EARLY YEARS PRACTITIONER, PLEASE REFER TO PAGES 60 AND 62.

LEARNING SUPPORT

Foundation Degree in Learning Support

 Delivered over two days or less

AWARDING BODY
University of Hull

COURSE DURATION
3 years - part-time

COURSE FEE
£4,400 per year

HOW TO APPLY
• Online application through the College websites

LOCATION

UCR

COURSE OVERVIEW

The Foundation Degree is a vocational programme for those who are involved in learning support as a Teaching Assistant, Classroom Assistant, Learning Mentor or volunteer in a learning support setting.

All modules are closely related to the work of learning support workers.

MODULES COVERED

- Study Skills for Higher Education
- Supporting and Enhancing Learning
- Social Contexts of Learning
- Digital Technologies for Learning
- Working with Professionals and Families
- Managing Behaviour
- Understanding Learning and Teaching
- Research Methods
- Safeguarding
- Policy and Practice
- Project Module

CAREER OPPORTUNITIES

The course can enhance employment prospects and provides the first step towards a full degree via a top-up route. It is possible to progress from the Foundation Degree in Learning Support to Qualified Teacher Status (QTS) at primary level or onto the BA (Hons) Education and Professional Development top-up programme, available at the University Centre Rotherham.

WHY STUDY WITH US?

The teaching team are well-qualified and can therefore offer you a high level of support and guidance. There is one-to-one support available when needed and studying with us allows you to continue working in your local placement.

As the course is validated by the University of Hull, all processes, from admissions through to assessment, are regularly reviewed to ensure that there is compliance with the University's academic regulations, equivalence in academic standards, appropriate staffing and resources are maintained and that there is a provision of a good quality Higher Education experience for all students on the programme.

ENTRY REQUIREMENTS

- We do not ask for specific qualifications but are looking instead for motivation, two-years' experience in learning support, a current placement for at least the two-years' duration of the course and evidence that you will be able to succeed in study at degree-level
- Please give details of your work experience in learning support (paid or voluntary), your reflection on what you have learnt and any qualifications you have taken
- You need to feel confident that you can meet the demands of an undergraduate programme including the ability to write extended essays and reports
- Although we do not require maths, English language or science GCSEs for acceptance onto the Foundation Degree, you may need such qualifications if you wish to move into teaching after this programme
- Basic level of IT skills

ENGINEERING

ENGINEERING

ENGINEERING



ELECTRICAL AND ELECTRONIC ENGINEERING

Higher National Certificate – Diploma Level 4 in Electrical and Electronic Engineering

Higher National Diploma – Diploma Level 5 in Electrical and Electronic Engineering

 Delivered over two days or less

UCAS COURSE CODE: H6P7

AWARDING BODY

Pearson BTEC

COURSE DURATION

18 months - part-time

COURSE FEE

Level 4 £6,900/Level 5 £6,900

HOW TO APPLY

- Online application through the College websites
- UCAS

LOCATION

UCR TCC

COURSE OVERVIEW

These courses are designed to provide you with a thorough understanding of the electrical and electronic technologies which are used by businesses nationally and globally.

By studying the theory behind these technologies, you will develop knowledge of how electrical and electronic engineering systems feature in everyday life.

This course provides advanced technical knowledge through electrical and electronic engineering principles, concepts and theory.

This course also provides the higher level technical vocational electrical and electronic engineering skills to prepare you for a range of related occupations. The Higher National Certificate (HNC) course is offered on a part-time basis over 3 semesters (18 months) and can be topped up to a Higher National Diploma (HND) qualification with further study.

WHY STUDY WITH US?

We continually invest in modern, state-of-the-art equipment including new mechatronics and Programmable Logic Controller (PLC) facilities.

With industry-experienced tutors, the course is designed to equip you with the skills set desired by employers within the electrical engineering industry and provide you with new opportunities for career development, an improved salary and increased job satisfaction.

CAREER OPPORTUNITIES

Upon successful completion of this course you could go into employment as an Electrical Engineer, another engineering-related occupation or progress onto an engineering degree.

These courses will also enhance your career opportunities and help meet aspirations to become a Supervisor or Manager.

MODULES COVERED

Level 4

Semester 1

- Engineering Maths
- Engineering Science
- Materials, Properties and Testing

Semester 2

- Electrical and Electronic Principles
- Automation
- Robotics and PLC's
- Mechatronics

Semester 3

- Managing a Professional Engineering Project
- Engineering Design

Level 5

Semester 1

- Further Maths
- Industrial Power
- Electronics and Storage
- Distributed Control Systems

Semester 2

- Professional Engineering Project
- Industrial Systems
- Further PLC's

Semester 3

- Research Project

ENTRY REQUIREMENTS

Level 4 HNC

- A relevant Level 3 qualification

Level 4 HND

- The HND is an 18-month top-up from the HNC Electrical and Electronic Engineering. The units gained on your HNC must be transferable to suit the HND matrix



NEW ENGINEERING AND CONSTRUCTION HIGHER OR DEGREE APPRENTICESHIPS IN DEVELOPMENT

We are currently developing new higher or degree apprenticeships within the engineering and construction sector. These apprenticeships will combine work with study and may include a work-based, academic or combined qualification or a professional qualification relevant to the engineering industry. As these apprenticeships are still in development, please keep referring to the UCR website for further information.

ucr.rotherham.ac.uk

GENERAL ENGINEERING

Higher National Certificate – Diploma Level 4 in General Engineering

Higher National - Diploma Level 5 in General Engineering

 Delivered over two days or less

UCAS COURSE CODE (HNC): **WC** 3WVA **TCC** 3W9A

UCAS COURSE CODE (HND): **WC** 7C2W **TCC** 7C2Q

AWARDING BODY

Pearson BTEC

COURSE DURATION

2 years - part-time

COURSE FEE

Level 4 £6,900 per year/Level 5 £6,900 per year

HOW TO APPLY

- Online application through the College websites
- UCAS

LOCATION

UCR **TCC** **WC**

COURSE OVERVIEW

These courses are designed to provide you with a thorough understanding of engineering technologies used by businesses nationally and globally.

By studying the theory behind these technologies, you will develop knowledge of how engineering systems feature in everyday life.

These courses provide advanced technical knowledge through general engineering principles, concepts and theory.

You will study higher-level technical vocational engineering skills to prepare you for a range of related occupations. The Higher National Certificate (HNC) course is offered on a part-time basis over 3 semesters (18 months) and can be topped up to a Higher National Diploma (HND) qualification with further study.

WHY STUDY WITH US?

We continually invest in new equipment and facilities, including mechatronics, Programmable Logic Controller (PLC) facilities, and metallurgy and science laboratories.

With industry-experienced tutors, the BTEC HNC and HND in General Engineering courses are designed to equip you with the skills set desired by employers within the engineering industry and provide you with new opportunities for career development, an improved salary and increased job satisfaction.

CAREER OPPORTUNITIES

Upon successful completion of these courses you could go into employment as an Engineer, another engineering-related occupation or progress onto an engineering degree.

These courses will also enhance your career opportunities and help meet aspirations for career progression to supervisor or managerial level roles.

MODULES COVERED

Level 4

Semester 1

- Engineering Maths
- Engineering Science
- Materials, Properties and Testing

Semester 2

- Mechanical Principles
- Electrical and Electronic Principles
- Mechatronics

Semester 3

- Managing a Professional Engineering Project
- Engineering Design

Level 5

Semester 1

- Further Maths
- Lean Manufacturing
- Distributed Control Systems

Semester 2

- Professional Engineering Project
- Industrial Systems
- Further PLC's

Semester 3

- Research Project

ENTRY REQUIREMENTS

Level 4 HNC

- A relevant Level 3 qualification

Level 5 HND

- The HND is an 18-month top-up from the HNC General Engineering. The units gained on your HNC must be transferable to suit the HND matrix

MECHANICAL ENGINEERING

Higher National Certificate – Diploma Level 4 in Mechanical Engineering

Higher National Diploma – Diploma Level 5 in Mechanical Engineering

 Delivered over two days or less

UCAS COURSE CODE: H3A5

AWARDING BODY

Pearson BTEC

COURSE DURATION

18 months - part-time

COURSE FEE

Level 4 £6,900 per year/Level 5 £6,900 per year

HOW TO APPLY

- Online application through the College websites
- UCAS

LOCATION

UCR **TCC**

COURSE OVERVIEW

These courses are designed to provide you with a thorough understanding of engineering technologies used by businesses nationally and globally.

By studying the theory behind these technologies, you will develop knowledge of how mechanical engineering systems feature in everyday life.

These courses also provide advanced technical knowledge through mechanical engineering principles, concepts and theory.

You will study higher-level technical vocational mechanical engineering skills to prepare you for a range of related occupations. The Higher National Certificate (HNC) course is offered on a part-time basis over 3 semesters (18 months) and can be topped up to a Higher National Diploma (HND) qualification with further study.

WHY STUDY WITH US?

We continually invest in modern, state-of-the-art equipment including new mechatronics and Programmable Logic Controller (PLC) facilities.

With industry-experienced tutors, the BTEC HNC and HND in Mechanical Engineering courses are designed to equip you with the skills set desired by employers within the mechanical engineering industry and provide you with new opportunities for career development, an improved salary and increased job satisfaction.

CAREER OPPORTUNITIES

Upon successful completion of this course you could go into employment as a Mechanical Engineer, another engineering-related occupation or progress onto an engineering degree.

These courses will also enhance your career opportunities and help meet aspirations for career progression to supervisor or managerial level roles.

MODULES COVERED

Level 4

Semester 1

- Engineering Maths
- Engineering Science
- Materials
- Properties and Testing

Semester 2

- Mechanical Principles
- Fundamentals of Thermodynamics and Heat
- Machining and Processing of Engineering Materials

Semester 3

- Managing a Professional Engineering Project
- Engineering Design

Level 5

Semester 1

- Further Maths
- Advanced Mechanical Principles
- ThermoFluids

Semester 2

- Professional Engineering Project
- Virtual Engineering
- Further PLC's

Semester 3

- Research Project

ENTRY REQUIREMENTS

Level 4 HNC

- A relevant Level 3 qualification

Level 5 HND

- The HND is an 18-month top-up from the HNC Mechanical Engineering. The units gained on your HNC must be transferable to suit the HND matrix

HAIR AND BEAUTY

HAIR AND BEAUTY

HAIR AND BEAUTY



HAIR AND BEAUTY MANAGEMENT

Higher National Certificate - Level 4 in Hair and Beauty Management

Higher National Diploma - Level 5 in Hair and Beauty Management

UCAS COURSE CODE (HNC): B3B4

UCAS COURSE CODE (HND): B3B5

AWARDING BODY

Pearson BTEC

COURSE DURATION

1 year - full-time (HNC)

1 year - full-time (HND)

COURSE FEE

£6,900 per year

HOW TO APPLY

- Online application through the College websites
- UCAS

LOCATION

UCR TCC

COURSE OVERVIEW

These courses deliver a higher level of study for those who are looking for a career within the hair and beauty sector as a Manager or Salon Owner. It will provide you with the technical skills needed to work within specialised areas of hair and beauty at an advanced level.

Throughout your time on the course you will learn new advanced practical skills, attend lectures and seminars, perform extensive research activities and supervise your peers at various levels to develop your management skills.

MODULES COVERED

Theory

- Salon, Sales and Quality Management
- Public Relations and Marketing
- Research Projects, Project Design, Implementation and Evaluation
- Management of Client Care and Health and Safety
- Human Health and Nutrition, Physical Activity, Lifestyle and Well-being

Practical

- Hair and Scalp Specialist Services
- Manage the Creation of a Hairstyle Collection
- Laser and Light Treatments for Skin Rejuvenation
- Indian Head Massage
- Sport and Exercise Massage
- Aromatherapy and Reflexology
- Employability Skills and Work Experience

WHY STUDY WITH US?

We have fully-equipped, state-of-the-art salons with professional ranges of products and new advanced Intense Pulsed Light (IPL) equipment.

We also have extensive links within industry, with highly-trained and industry-experienced staff.

You will have the opportunity to offer professional treatments in commercial clinics as an advanced specialist.

CAREER OPPORTUNITIES

With successful completion of these courses, you could go onto additional Higher Education courses or work in the industry. You could work as a Salon or Spa Manager or further your career by studying to become a Lecturer.

ENTRY REQUIREMENTS

- Level 3 qualification in hair, beauty therapy or holistic therapies
- GCSE English and maths grade C/4 and above or equivalent
- You will also be required to successfully complete an interview with a course tutor
- You must be flexible and able to commit to work experience activities as part of your course



SPECIALIST MAKE-UP

Higher National Certificate - Diploma Level 4 in Performing Arts: Specialist Make-up

Higher National Diploma - Diploma Level 5 in Performing Arts: Specialist Make-up

UCAS COURSE CODE (HNC): 8U7L

UCAS COURSE CODE (HND): 8U7K

AWARDING BODY

Pearson BTEC

COURSE DURATION

1 year - full-time

COURSE FEE

£6,900 per year

HOW TO APPLY

- Online application through the College websites
- UCAS

LOCATION

RP

COURSE OVERVIEW

These courses deliver a higher level of study for those who are looking for a career within the field of specialist make-up. These courses will offer you the technical skills needed to work within specialised media make-up at an advanced level.

Throughout your time on the course you will perform a variety of hair, make-up and character styles on your peers, models and actors. You will also develop a portfolio to showcase your professional skills.

MODULES COVERED

Year 1

- The Performing Arts Industry
- Professional Development
- Investigation of a Specialism
- Special FX
- Hair and Make-up Application
- Fashion and Fashion Editorial Hair and Make-up
- Period Hair and Make-up
- Hair and Make-up Design

Year 2

- Preparation, Process and Production in Creative Arts
- Design Techniques and Applications for the Performer
- Historical Context in Performing Arts
- Personal and Professional Development
- Project Design, Implementation and Evaluation
- Work-based Learning
- Period Hair and Make-up
- TV and Film Hair and Make-up

WHY STUDY WITH US?

You will have many opportunities to take part in commercial work, creating characters on theatre productions, designing high-end fashion make-up for fashion shows and working with medical professionals to create casualty effects. Former students have taken part in Europe's largest disaster simulation in London.

You will have access to state-of-the-art facilities, equipment and professional products from companies such as Illamasqua, Mistair and Kryolan.

CAREER OPPORTUNITIES

Upon successful completion of these courses you could go into the TV and film industry, theatre, make-up consultancy or self-employment.

ENTRY REQUIREMENTS

- Level 3 qualification in Hair and Media Make-up
- GCSE English and maths grade C/4 or equivalent
- You will also be required to successfully complete an interview with a course tutor
- You must be flexible and able to commit to evening and weekend activities on location
- You will be expected to purchase a uniform and kit and pay for educational visits

THEATRICAL HAIR AND MEDIA MAKE-UP

Foundation Degree in Theatrical Hair and Media Make-up

AWARDING BODY

University of Hull

COURSE DURATION

2 years - full-time

COURSE FEE

£6,900 per year

HOW TO APPLY

- Online application through the College websites
- UCAS

LOCATION

UCR TCC

UCAS POINTS

48

COURSE OVERVIEW

This course delivers a higher level of study for those who are looking for a career within the field of specialist make-up. The course will offer you the technical skills needed to work within specialised media make-up at an advanced level.

Throughout your time on the course you will perform a variety of hair, make-up and character styles on your peers, models and actors. You will also develop a portfolio to showcase your professional skills.

MODULES COVERED

Year 1

- Creative Postiche
- Current Trends in Film Hair and Media Make-up
- Mask Design and Construction
- Photographic Materials, Techniques and Processes
- Understanding the Industry of Media Hair and Make-up
- Work-based Experience

Year 2

- Casualty Simulation
- Costume Design
- Personal and Professional Development
- Special FX Prosthetics with Character Make-up
- TV and Film Hair and Media Make-up
- Wig Making and Design

WHY STUDY WITH US?

You will have many opportunities to take part in commercial work, creating characters on theatre productions, designing high-end fashion make-up for fashion shows and working with medical professionals to create casualty effects. Former students have previously taken part in Europe's largest disaster simulation in London.

You will have access to state-of-the-art facilities, equipment and professional products from companies such as Illamasqua, Mistair and Kryolan.

CAREER OPPORTUNITIES

Upon successful completion of these courses you could go into the TV and film industry, theatre, make-up consultancy or self-employment.

ENTRY REQUIREMENTS

- A relevant Level 3 qualification
- GCSE English and maths at grade C/4 or above or equivalent
- You will be required to successfully complete an interview with a course tutor
- You must be flexible and able to commit to evening and weekend activities on location
- You will be expected to purchase a uniform and kit and pay for educational visits

THEATRICAL HAIR AND MEDIA MAKE-UP (TOP-UP)

Bachelor of Arts (Hons) Theatrical Hair and Media Make-up (Top-up)

AWARDING BODY
University of Hull

COURSE DURATION
1 year - full-time

COURSE FEE
£6,900 per year

HOW TO APPLY

- Online application through the College websites
- UCAS

LOCATION

UCR TCC

UCAS POINTS

48

COURSE OVERVIEW

This course delivers a higher level of study for those who are looking for a career within the field of specialist make-up. The course will offer you the technical skills needed to work within specialised media make-up at an advanced level.

Throughout your time on the course you will perform a variety of hair, make-up and character styles on your peers, models and actors. You will also develop a portfolio to showcase your professional skills.

MODULES COVERED

- Dissertation
- Fantasy Character Design Creation
- Managing the Creation of a Showcase
- Period and Historical Design Techniques
- Production Management

WHY STUDY WITH US?

You will have many opportunities to take part in commercial work, creating characters on theatre productions, designing high-end fashion make-up for fashion shows and working with medical professionals to create casualty effects. Former students have previously taken part in Europe's largest disaster simulation in London.

You will have access to state-of-the-art facilities, equipment and professional products from companies such as Illamasqua, Mistair and Kryolan.

CAREER OPPORTUNITIES

Upon successful completion of these courses you could go into the TV and film industry, theatre, make-up consultancy or self-employment.

ENTRY REQUIREMENTS

- A relevant Level 4/5 qualification
- GCSE English and maths at grade C/4 or above or equivalent
- You will be also be required to successfully complete an interview with a course tutor
- You must be flexible and able to commit to evening and weekend activities on location
- You will be expected to purchase a uniform and kit and pay for educational visits

MEDIA AND PHOTOGRAPHY

MEDIA AND PHOTOGRAPHY

MEDIA AND PHOTOGRAPHY





ELLIE TREZISE

BA (Hons) in Media, Moving Image and Photography

"UCR is a good environment to learn. I love that I get to see my friends on my course whilst getting an education at the same time."

MEDIA, MOVING IMAGE AND PHOTOGRAPHY

Bachelor of Arts (Hons) in Media, Moving Image and Photography

UCAS COURSE CODE: W6W6

AWARDING BODY
University of Hull

COURSE DURATION
3 years - full-time

COURSE FEE
£6,900 per year

HOW TO APPLY

- Online application through the College websites
- UCAS

LOCATION

UCR TCC

UCAS POINTS

64

COURSE OVERVIEW

This course will focus on the key developments within the lens-based industries, from both an historical and technical perspective.

You will engage in learning all aspects of current technology associated with both media and photography.

The modules will allow you to work on self-generated and client-led briefs, which will challenge you to think creatively and consider the parameters of the set tasks.

The course focuses on enabling you to gain work placements and find freelance opportunities whilst giving a realistic insight into the lens-based industries.

During the course you will develop your photographic techniques in both traditional and digital practice and image manipulation as well as ideas that embody a range of media formats and skills to create a range of products.

MODULES COVERED

Year 1

- Digital Foundations
- Research Techniques
- Historical Context

Optional modules include

Single Camera Techniques, Multi Camera Techniques, Film Studies (Media pathway), Processes and Approaches to Traditional Photography, Processes and Approaches to Digital Photography, Digital Image Manipulation (Photography pathway).

Year 2

- Professional Practice
- Negotiated Project
- Specialist Practice Investigation

Optional modules include

Sound Design, Scriptwriting for Moving Image, Advanced Production for Moving Image (Media pathway), Photographic Genres and Technologies, Introduction to the Artists Book, Digital Story Telling (Photography pathway).

Year 3

- Dissertation
- Freelance Practice in the Creative Industries
- Marketing and Branding for Lens-Based Practitioners
- Realisation and Development
- Planning and Developing an Exhibition

CAREER OPPORTUNITIES

Upon successful completion of this course you could go into freelance photography, commercial photography and photographic editing.

Alternatively you could pursue a career in sound design, camera operating, directing or producing.

ENTRY REQUIREMENTS

- A relevant Level 3 qualification
- GCSE English and maths at grade C/4 or above or equivalent
- You will also be expected to provide examples or a showreel/portfolio of work at interview
- If English is not your first language you must have an IELTS score of 6.0 with a minimum of 5.5 in all key skills or equivalent

PERFORMANCE

PERFORMANCE

PERFORMANCE



POPULAR MUSIC PERFORMANCE AND PRODUCTION

Bachelor of Arts (Hons) in
Popular Music Performance and Production

UCAS COURSE CODE: W3W2

 Delivered over two days or less

AWARDING BODY
University of Hull

COURSE DURATION
3 years - full-time
6 years - part-time

COURSE FEE
£6,900 per year

HOW TO APPLY

- Online application through the College websites
- UCAS

LOCATION

UCR **TCC**

UCAS POINTS

64

COURSE OVERVIEW

This course will provide you with a range of desirable skills in the modern music industry. It also offers an educational experience which will nurture your enthusiasm for popular music and stimulate academic curiosity in the subject.

MODULES COVERED

Year 1

- Music Theory in Practice
- Performance 1 and 2
- Professional Roles and Practice
- Practitioner Skills 1 and 2
- Skills for the Professional World

Year 2

- Musicology
- Performance Project
- Popular Music in Practice
- Practitioner Skills 3 and 4

Year 3:

- Dissertation
- Performance Showcase
- Practitioner Skills 5 and 6

WHY STUDY WITH US?

This degree course offers you the chance to be part of the Roland Music Academy, using the latest industry-standard equipment.

The Roland Music Academy seeks to be innovative and explore new dimensions in the world of music performance and music technology.

Teamwork is pivotal to the modern music industry and our programme is specially designed to enable students from technology and performance pathways to study together and combine your skills.

We offer cutting-edge studio facilities, excellent personal tuition and an ability to work as part of a team in a friendly environment.

CAREER OPPORTUNITIES

Upon successful completion of this course you could go into employment as a Performing Musician, Educator, Producer, Live Sound Engineer or Freelance Practitioner.

ENTRY REQUIREMENTS

- A relevant Level 3 qualification or substantial relevant experience
- GCSE English and maths at grade C/4 or above or equivalent
- If English is not your first language you must have an IELTS score of 6.0 with a minimum of 5.5 in all key skills or equivalent

THEATRE, ACTING AND PERFORMANCE

Bachelor of Arts (Hons) in Theatre, Acting and Performance

UCAS COURSE CODE: W4R4

AWARDING BODY
University of Hull

COURSE DURATION
3 years - full-time

COURSE FEE
£6,900 per year

HOW TO APPLY

- Online application through the College websites
- UCAS

LOCATION	UCAS POINTS
UCR TCC	64

COURSE OVERVIEW

This course offers a broad practical curriculum underpinned by academic study, with the opportunity for you to influence the way you work. The main pathway is acting however, we do offer alternative modules for the musical theatre pathway.

You will gain an insight into the creation of new work, acting and performance in a range of styles from classical to contemporary. You will discover the theoretical and historical backdrop to theatre, acting and performance and will obtain the industry-desired skills and contacts.

You will work with professionals and highly-skilled staff, go on trips and take part in invaluable workshops.

MODULES COVERED

Year 1

- Approaches to Acting 1
- Acting with a Mask
- The Empty Space: (Devising Innovative Performance)
- Theatre in Education and Community Arts
- Preparation Process and Production: Making it Happen
- Historical Context of Performance

Musical Theatre pathway will do Singing and Movement for performers.

Year 2

- Approaches to Acting 2
- Site Specific Performance 1 and 2
- Performing Shakespeare
- Performance Study and Demonstration
- Stage to Screen

Musical Theatre will do Dance and Acting for Musical Theatre.

Year 3

- Integrated Final Performance
- Creative Arts Research (Dissertation) (written and practical or just written)
- Personal and Professional Development - Industry Placement

Musical Theatre pathway will continue with a final Musical Theatre Performance.

WHY STUDY WITH US?

The course includes live projects in partnership with a range of companies and organisations such as the Rotherham Metropolitan Borough Council (RMBC) Events team, Open Minds Theatre Company, Rotherham Underground, Rotherham Music, Rotherham United and South Yorkshire Fire and Rescue as well as the opportunity to deliver workshops to local schools.

A further enhancement to the course is a trip to Whitby for three nights to write, act in and direct short films, which are then screened and entered into competitions.

We have an impeccable 100% pass rate with former students from the course being recognised as Student of the Year and have gone on to set up companies such as Renegade Productions, work freelance and teach. A number of our students have performed at the Crucible Theatre and at the National Theatre for the Connexions festival.

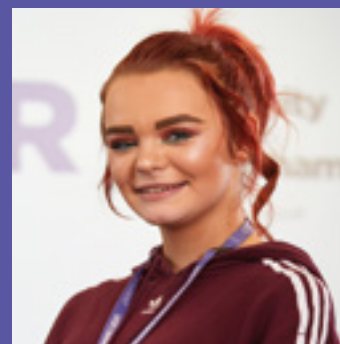
CAREER OPPORTUNITIES

After successful completion of this course you can progress into acting, directing and arts related pathways, including stage management, script writing or working freelance in community or youth workshops.

Alternatively, you can progress onto further study on a PGCE or continue your studies to achieve a Master's degree.

ENTRY REQUIREMENTS

- A relevant Level 3 qualification
- GCSE English and maths at grade C/4 or above or equivalent
- If English is not your first language you must have an IELTS score of 6.0 with a minimum of 5.5 in all key skills or equivalent



VICTORIA BAUGH

BA (Hons) in Theatre, Acting and Performance

“My plans after completing my course are to work on cruise ships. I feel that during my time here I have learnt more about different dance styles which will help me in my future career.”





SPORT SCIENCE

Foundation Degree (FdSc) in Sport Science

SUBJECT TO VALIDATION

AWARDING BODY
University of Hull

COURSE DURATION
2 years - full-time
4 years - part-time

COURSE FEE
£6,900 per year

HOW TO APPLY
• Online application through the College websites
• UCAS

LOCATION	UCAS POINTS
DV RP	48

COURSE OVERVIEW

The Foundation Degree (FdSc) in Sport Coaching is ideal for individuals who wish to further their career in the sport, fitness and exercise industry.

You will develop both your practical and theoretical knowledge of coaching and fitness as well as covering contemporary units such as coaching active lifestyles, coaching for special populations and innovative and exclusive delivery.

MODULES COVERED

- Anatomy and Physiology
- Gym Instruction
- Coaching Active Lifestyles
- Personal and Professional Development
- Psychology
- Sports Coaching Foundation
- Advanced Trainer
- Coaching in Sport
- Informed Research
- Nutrition
- Human Assessment
- Special Populations

WHY STUDY WITH US?

On this course you will have access to our excellent sports facilities which include:

- A fully commercial, on-site sports centre (DVC Sports)
- FIFA 2-star accredited 3G Astroturf pitch
- Multisport cages
- Full-size grass football pitches
- Sports hall
- State-of-the-art fitness suite

We use a wealth of sporting equipment and technology used by professional sports clubs including a sports GPS system, timing gates and various other technological equipment used to measure fitness and performance.

CAREER OPPORTUNITIES

Upon successful completion of this course you could go into employment as a Sports Coach, Performance Coach, Fitness Centre Manager, Sports Development Officer and many more.

With further study you could also progress into employment in teaching or sports analysis.

ENTRY REQUIREMENTS

- GCSE English and maths at grade C/4 or above or equivalent

Plus one of the following

- 48 UCAS points
- Access to HE Diploma from a recognised HE course
- This course involves possible contact with children or other potentially vulnerable client groups and, therefore, an enhanced Disclosure and Barring Service (DBS) check (formerly an enhanced Criminal Records Bureau check) is a mandatory requirement

SPORT SCIENCE (TOP-UP)

Bachelor of Science (Hons) in Sport Science (Top-up)

UCAS COURSE CODE: 3W9M

SUBJECT TO VALIDATION

AWARDING BODY
University of Hull

COURSE DURATION
1 year - full-time

COURSE FEE
£6,900 per year

HOW TO APPLY

- Online application through the College websites
- UCAS

LOCATION

DV

COURSE OVERVIEW

The degree in Sport Science is ideal for individuals who wish to top-up from a relevant Foundation Degree to further their career in the sport, fitness and exercise industry.

You will develop both your practical and theoretical knowledge of fitness and performance as well as covering units such as contemporary issues in physical education and sport and performance analysis.

MODULES COVERED

- Dissertation
- Advanced Coaching Science
- Contemporary Issues in Sport
- Advanced Special Populations
- Employability and Enterprise
- Sports Science Support

WHY STUDY WITH US?

On our BSc Hons Degree in Sport Science students have access to our excellent sports facilities which include:

- A fully commercial, on-site sports centre (DVC Sports)
- FIFA 2-star accredited 3G Astro turf pitch
- Multisport cages
- Full-size grass football pitches
- Sports hall
- State-of-the-art fitness suite

We use a wealth of sporting equipment and technology used by professional sports clubs including a sports GPS system, timing gates and various other technological equipment used to measure fitness and performance.

CAREER OPPORTUNITIES

Upon successful completion of this course you could go into employment as a Sports Coach, Performance Coach, Fitness Centre Manager or Sports Development Officer.

With further study you could progress into employment in teaching or sports analysis.

ENTRY REQUIREMENTS

- You should hold a Foundation Degree in Sport and Exercise or a similar Foundation Degree
- Candidates with other Level 5 qualifications in appropriate subjects may also be considered but must have completed a research methods module
- Completion of a two-year Foundation Degree in a related discipline with minimum 50% grade in year 2
- Minimum of GCSE English and maths grade C/4 or equivalent



HIGHER OR DEGREE APPRENTICESHIPS

Earn while you learn and gain industry-relevant knowledge and skills on the job whilst studying one of our comprehensive higher or degree apprenticeships. Higher or degree apprenticeships at Levels 4, 5, 6 and 7 are equivalent to a foundation degree and above.

Higher or degree apprenticeships provide you with the opportunity to progress in your career whilst training at degree-level and still gaining a wage. As with other apprenticeships you are employed throughout and the cost of the fees are paid by your employer.

As a higher or degree apprentice you will spend a minimum of 30 hours a week at work, gaining specific skills tailored to your industry of choice.

We have invested in modern resources to provide excellent industry-standard learning experiences. As we have well established links with employers across many industries and business sectors, you will become familiar with key skills needed by relevant employers in the modern workplace.

In addition to our current higher or degree apprenticeships, we are in the process of developing a range of higher or degree apprenticeships in the following sectors:

- Construction
- Engineering
- Management

To keep up to date with our latest higher or degree apprenticeship offer, please visit our website:

ucr.rotherham.ac.uk

HIGHER OR DEGREE APPRENTICESHIPS

HIGHER OR DEGREE APPRENTICESHIPS



CLIMB THE CAREER LADDER WITHOUT BUILDING ANY STUDENT DEBT

Higher or degree apprenticeships tuition fees are paid for by your employer.

ACCOUNTING/TAXATION TECHNICIAN

Higher Apprenticeship Level 4 in Professional Accounting/Taxation Technician

AWARDING BODY

ACCA

COURSE DURATION

18 - 24 months - part-time

COURSE FEE

ACCA registration fees £105 + £79
Course fees based on Business Development Team

HOW TO APPLY

- Online application through the College websites

LOCATION

UCR

COURSE OVERVIEW

This apprenticeship is ideal for those who wish to train in the workplace as a professional accounting technician, a role which has responsibility for creating and reviewing accurate financial information within an organisation.

You will attend University Centre Rotherham (UCR) one day a week to study the Professional Diploma in Financial and Management Accounting through ACCA. This will teach you the technical knowledge to support you in your workplace training.

MODULES COVERED

- Foundations in Accountancy (FIA) – 4 units
Financial Accounting (FFA)
Management Accounting (FMA)
Financial Accounting in Business (FAB)
- Foundations in Professionalism (FIP)
- End Point Assessment (EPA)
- Portfolio of work-based evidence

WHY STUDY WITH US?

All members of the teaching team have worked in the industry and are nationally recognised as an outstanding provider of accountancy tuition.

You will be visited in the workplace and supported to produce a portfolio of evidence of your practice.

CAREER OPPORTUNITIES

Upon successful completion of this course you could go into employment as a Management Accountant, Financial Accountant, Assistant Accountant, Payroll Officer, Senior Accounts Clerk, Financial Analyst or Ledger Supervisor.

ENTRY REQUIREMENTS

- AAT/ACCA Level 3
- GCSE English and maths at grade C/4 or above or equivalent

HEALTH AND SOCIAL CARE – ASSISTANT PRACTITIONER

Foundation Degree (FdSc) in Professional Practice in Health and Social Care – Higher Apprenticeship Assistant Practitioner

AWARDING BODY

Sheffield Hallam University

COURSE DURATION

2 years – full-time

COURSE FEE

N/A

HOW TO APPLY

- Online application through the College websites

LOCATION

UCR

COURSE OVERVIEW

On completion of this apprenticeship you will achieve a Foundation Degree in Professional Practice in Health and Social Care, alongside the Higher Apprenticeship Standard.

This apprenticeship has been designed in response to the rapidly changing workforce demands and policy initiatives aimed at modernising services and improving quality, productivity and efficiency. It will enable band 1 and 2 workers to progress into band 3 and 4 roles. You will develop the skills and learning required by a range of assistant practitioners to provide patient care across primary and secondary care settings in nursing and allied occupations.

MODULES COVERED

Year 1

- Work-based Learning Academic 1/Practice
- Reflective and Personal Development Skills
- Essential Sciences for Person-Centred Care
- Integrated Holistic Assessment and Delivery of Health and Social Care Interventions
- Foundations for Effective Collaborative Practice

Year 2

- Work-based Learning Academic 2/Practice
- Promoting Health, Wellbeing and Independence
- Using and Evaluating Evidence to Inform Practice
- Leadership and Management

WHY STUDY WITH US?

This Higher Apprenticeship includes a combination of work-based learning and specialist education which will allow you to complete the Level 4/5 Assistant Practitioner/Higher Apprenticeship Standard and the Foundation Degree in Health and Social Care.

CAREER OPPORTUNITIES

Upon successful completion of this course you could go into employment in diagnostic imaging, nursing and midwifery, mental health professions, occupational therapy, radiography and oncology, physiotherapy or social work.

ENTRY REQUIREMENTS

- GCSE English and maths at grade C/4 or above or equivalent
- Access to HE Diploma from a recognised HE course

COURSE INDEX

ACCESS TO HIGHER EDUCATION

Art and Design	34
Computing	35
Health Science Professions	36
Humanities	38
Science	39

ACCOUNTING, BUSINESS AND MANAGEMENT

Accounting	42
Management Higher or Degree Apprenticeships	43
Business Enterprise	45
Travel and Tourism Management	46

ANIMAL MANAGEMENT

Animal Management	51
-------------------	----

ARTS

Art and Design	54
Graphic Design	55
Graphic Communication Design	57

CARING PROFESSIONS

Early Childhood Studies	60
Early Childhood Studies (Top-up)	62
Counselling	63
Professional Practice in Health and Social Care	65

COMPUTING AND DIGITAL

Computing	68
Computing and Systems Development	71
Games Design	73

CRIMINOLOGY AND PUBLIC SERVICES

Applied Justice and Social Sciences	77
-------------------------------------	----

EDUCATION

Education and Professional Development	80
Certificate of Education (In-Service)	81
Certificate of Education (Pre-Service)	82
PgCE/PGCE: In-Service	84
PgCE/PGCE: Pre-Service	85
Learning Support	87

ENGINEERING

Electrical and Electronic Engineering	90
Engineering and Construction Higher or Degree Apprenticeships	91
General Engineering	92
Mechanical Engineering	93

HAIR AND BEAUTY

Hair and Beauty Management	96
Specialist Make-up	98
Theatrical Hair and Media Make-up	99
Theatrical Hair and Media Make-up (Top-up)	101

MEDIA AND PHOTOGRAPHY

Media, Moving Image and Photography	105
-------------------------------------	-----

PERFORMANCE

Popular Music Performance and Production	109
Theatre, Acting and Performance	110

SPORT

Sport Science	115
Sport Science (Top-up)	116

HIGHER AND DEGREE APPRENTICESHIPS

Introduction	118
New Higher or Degree Apprenticeships	118
Accounting/Taxation Technician	120
Health and Social Care - Assistant Practitioner	121

STUDY DEGREES LOCALLY

STUDY DEGREES LOCALLY

UCR

ROTHERHAM • NORTH NOTTS • DEARNE VALLEY

Rotherham College
North Notts College
Dearne Valley College
and
University Centre Rotherham

Part of
RNN GROUP



ROTHERHAM

NORTH NOTTS

DEARNE VALLEY